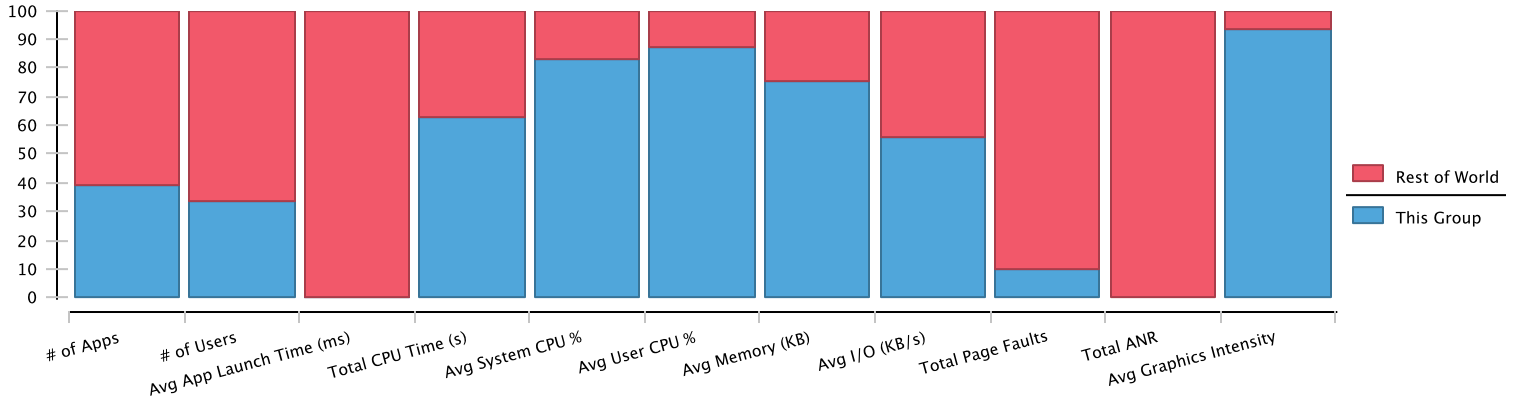


Machine group: Citrix Beijing Office - SE group

Time range: October 1, 2011 12:00:00 AM to October 31, 2011 11:59:59 PM US/Eastern

Machines in group: 7



Group Summary

Group	# of Applications	# of Machines	Avg Launch Time (ms)	Total CPU Time (s)	Avg System CPU %	Avg User CPU %	Avg Mem Size (KB)	Avg I/O (KB/s)	Total # Page Faults	Total # ANR	Avg Graphics Intensity
Rest of World	296	46	1792856.07	92.34	0.04	0.03	12263.87	12.01	1973.103	0	20.15
Citrix Beijing Office - SE group	190	5	404.93	155.41	0.19	0.17	37761.84	15.22	214.468	0	283.31

Summary - Applications Using Most CPU

Application	Group	# of Users	Avg Launch Time (ms)	Total CPU Time (s)	Avg System CPU %	Avg User CPU %	Avg Mem Size (KB)	Avg I/O (KB/s)	Total # Page Faults	Total # ANR	Avg Graphics Intensity
3D Text Screen Saver	Rest of World	0	0.00	0.00	0.00	0.00	0.00	0.00	0	0	0.00
	Citrix Beijing Office - SE group	1	0.00	764.49	5.73	0.39	23131.11	0.00	998.788	0	18.80
Cisco WebEx Service	Rest of World	0	0.00	0.00	0.00	0.00	0.00	0.00	0	0	0.00
	Citrix Beijing Office - SE group	5	28.58	456.64	1.75	0.79	131055.80	111.51	1114.201	0	1394.94
System	Rest of World	0	0.00	0.00	0.00	0.00	0.00	0.00	0	0	0.00
	Citrix Beijing Office - SE group	2	0.00	371.71	0.67	0.00	79.54	18.03	1.636	0	0.00
Internet Explorer	Rest of World	0	0.00	0.00	0.00	0.00	0.00	0.00	0	0	0.00
	Citrix Beijing Office - SE group	4	50.49	318.83	0.14	0.90	92057.98	6.05	82.511	0	1570.83
Host Process for Windows Services	Rest of World	0	0.00	0.00	0.00	0.00	0.00	0.00	0	0	0.00
	Citrix Beijing Office - SE group	6	0.00	251.97	0.36	0.09	31615.28	9.01	167.428	0	5.11
Windows Task Manager	Rest of World	0	0.00	0.00	0.00	0.00	0.00	0.00	0	0	0.00
	Citrix Beijing Office - SE group	3	146.63	249.98	0.47	0.44	1924.27	0.00	0	0	121.77
Microsoft File Transfer Manager	Rest of World	0	0.00	0.00	0.00	0.00	0.00	0.00	0	0	0.00
	Citrix Beijing Office - SE group	1	31.00	231.42	1.47	3.32	4428.00	961.00	0	0	32.00
Microsoft Windows Search Protocol Host	Rest of World	0	0.00	0.00	0.00	0.00	0.00	0.00	0	0	0.00
	Citrix Beijing Office - SE group	5	0.00	175.06	0.35	0.54	3421.07	55.03	248.194	0	13.71
Windows host process (Randll32)	Rest of World	0	0.00	0.00	0.00	0.00	0.00	0.00	0	0	0.00
	Citrix Beijing Office - SE group	2	32.50	155.42	0.99	2.05	15417.65	261.59	1644.235	0	82.53
Firefox	Rest of World	0	0.00	0.00	0.00	0.00	0.00	0.00	0	0	0.00
	Citrix Beijing Office - SE group	3	37.82	149.36	0.34	1.20	158211.48	39.82	175.663	0	106.89
OUTLOOK	Rest of World	2	24.27	184.45	0.44	0.38	75973.40	19.84	52.655	0	936.11
	Citrix Beijing Office - SE group	4	122.31	146.32	0.12	0.22	127416.85	71.14	74.423	0	1354.38
Symantec Service Framework	Rest of World	0	0.00	0.00	0.00	0.00	0.00	0.00	0	0	0.00
	Citrix Beijing Office - SE group	0	0.00	140.91	1.08	0.80	12534.36	209.87	305.633	0	16.00

Machine group: Citrix Beijing Office - SE group

Time range: October 1, 2011 12:00:00 AM to October 31, 2011 11:59:59 PM US/Eastern

Machines in group: 7

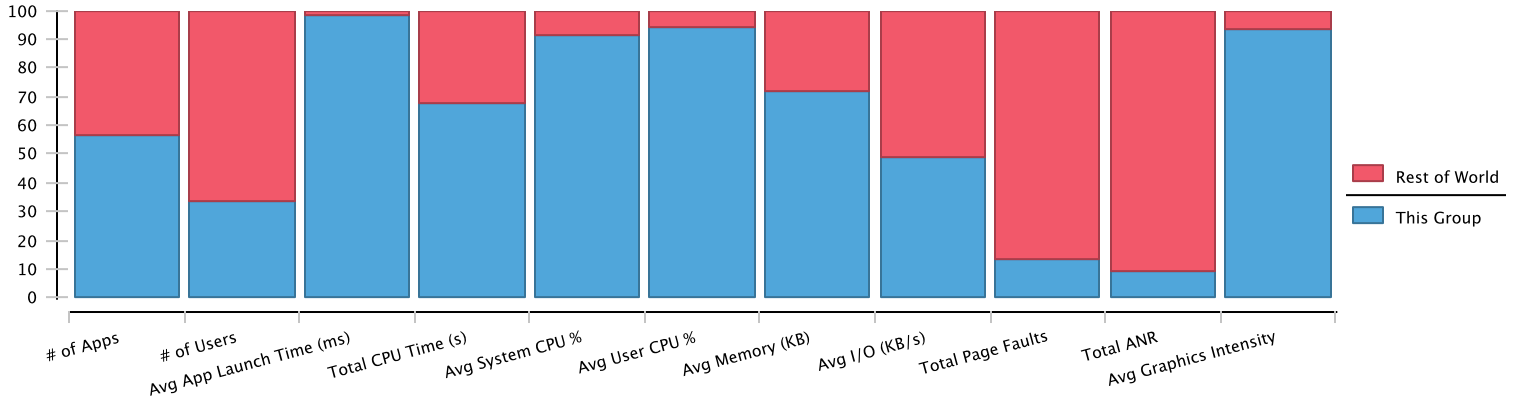
Details - Individual Application Executions Using Most CPU

Application	User	Machine	Avg Launch Time (ms)	Total CPU Time (s)	Avg System CPU %	Avg User CPU %	Avg Mem Size (KB)	Avg I/O (KB/s)	Total Page Faults	Total ANR	Avg Graphics Intensity
Internet Explorer	MVanFrayen@LWL	atl-11460	52.68	223185.48	0.06	0.57	98624.92	4.66	72499	0	1761.09
Host Process for Windows Services	SYSTEM@Local Directory	atl-11453	0.00	207670.08	1.67	0.06	50509.24	3.85	95076	0	4.00
3D Text Screen Saver	MVanFrayen@LWL	atl-11460	0.00	151368.36	5.73	0.39	23131.11	0.00	197760	0	18.80
Internet Explorer	jflatbush@LWL	atl-11471	39.62	80831.76	0.79	3.59	46820.79	17.64	5760	0	94.91
Symantec Service Framework		atl-11471	0.00	66438.12	1.08	0.79	12527.73	209.51	144261	0	16.00
Host Process for Windows Services	SYSTEM@Local Directory	atl-11460	0.00	51516.60	0.09	0.05	29640.33	9.30	65150	0	4.00
System	SYSTEM@Local Directory	atl-11453	0.00	43646.16	1.02	0.00	59.27	2.24	153	0	0.00
System	SYSTEM@Local Directory	atl-11471	0.00	41764.68	1.25	0.00	47.87	60.55	211	0	0.00
Google Chrome	DBoone@LWL	atl-11457	30.68	37645.44	0.06	0.24	47404.51	26.90	447466	0	94.43
Microsoft Office Professional Plus 2010	jflatbush@LWL	atl-11471	38.86	31654.08	0.26	0.47	83112.46	102.63	10867	0	636.39
Firefox	jflatbush@LWL	atl-11471	37.84	30650.88	0.34	1.20	158102.63	38.86	35544	0	106.02
OUTLOOK	MVanFrayen@LWL	atl-11460	147.41	30225.84	0.11	0.17	144499.11	77.48	15730	0	1536.20

Machine group: Dell win server 2008

Time range: October 1, 2011 12:00:00 AM to October 31, 2011 11:59:59 PM US/Eastern

Machines in group: 21



Group Summary

Group	# of Applications	# of Machines	Avg Launch Time (ms)	Total CPU Time (s)	Avg System CPU %	Avg User CPU %	Avg Mem Size (KB)	Avg I/O (KB/s)	Total # Page Faults	Total # ANR	Avg Graphics Intensity
Rest of World	217	44	20170.35	76.15	0.03	0.01	12014.63	12.30	1693.692	0	15.87
Dell win server 2008	284	7	1392208.59	156.81	0.26	0.22	30193.87	11.70	269.451	0	221.50

Summary - Applications Using Most CPU

Application	Group	# of Users	Avg Launch Time (ms)	Total CPU Time (s)	Avg System CPU %	Avg User CPU %	Avg Mem Size (KB)	Avg I/O (KB/s)	Total # Page Faults	Total # ANR	Avg Graphics Intensity
Dropbox	Rest of World	0	0.00	0.00	0.00	0.00	0.00	0.00	0	0	0.00
	Dell win server 2008	9	3297.39	972.54	2.63	1.17	28484.57	1.95	146.693	0	49.20
3D Text Screen Saver	Rest of World	0	0.00	0.00	0.00	0.00	0.00	0.00	0	0	0.00
	Dell win server 2008	1	0.00	764.49	5.73	0.39	23131.11	0.00	998.788	0	18.80
Internet Explorer	Rest of World	0	0.00	0.00	0.00	0.00	0.00	0.00	0	0	0.00
	Dell win server 2008	6	44.80	462.89	0.15	0.80	87793.47	5.73	149.383	0	1365.02
iTunes	Rest of World	0	0.00	0.00	0.00	0.00	0.00	0.00	0	0	0.00
	Dell win server 2008	2	43399.51	361.73	0.36	5.54	72283.39	26.33	1713.884	0	506.62
System	Rest of World	0	0.00	0.00	0.00	0.00	0.00	0.00	0	0	0.00
	Dell win server 2008	2	0.00	315.33	0.79	0.00	94.39	12.04	1.759	0	0.00
oxygenvfs	Rest of World	0	0.00	0.00	0.00	0.00	0.00	0.00	0	0	0.00
	Dell win server 2008	1	15.00	292.80	0.06	48.74	47284.00	1.00	0	0	0.00
Cisco WebEx Service	Rest of World	0	0.00	0.00	0.00	0.00	0.00	0.00	0	0	0.00
	Dell win server 2008	6	29.28	290.31	0.90	0.46	79838.41	31.81	843.789	0	1301.43
Microsoft File Transfer Manager	Rest of World	0	0.00	0.00	0.00	0.00	0.00	0.00	0	0	0.00
	Dell win server 2008	1	31.00	231.42	1.47	3.32	4428.00	961.00	0	0	32.00
Microsoft Windows Search Protocol Host	Rest of World	0	0.00	0.00	0.00	0.00	0.00	0.00	0	0	0.00
	Dell win server 2008	5	0.00	195.77	0.36	0.55	3531.96	69.95	402.479	0	13.92
OUTLOOK	Rest of World	3	21.86	38.06	0.09	0.22	44385.83	1.71	11.808	0	816.41
	Dell win server 2008	3	105.25	189.24	0.20	0.26	129091.66	70.71	84.359	0	1346.41
Windows® installer	Rest of World	0	0.00	0.00	0.00	0.00	0.00	0.00	0	0	0.00
	Dell win server 2008	1	0.00	174.70	4.09	1.35	7875.79	749.00	619.737	0	4.00
QBHelp	Rest of World	0	0.00	0.00	0.00	0.00	0.00	0.00	0	0	0.00
	Dell win server 2008	1	0.00	162.14	0.04	1.28	36121.80	4.80	78.6	0	249.90

Details - Individual Application Executions Using Most CPU

Application	User	Machine	Avg Launch Time (ms)	Total CPU Time (s)	Avg System CPU %	Avg User CPU %	Avg Mem Size (KB)	Avg I/O (KB/s)	Total Page Faults	Total ANR	Avg Graphics Intensity
Dropbox	DKhare@LWL	WXPX86-DK	10696.27	253221.18	10.35	4.59	38799.21	2.66	33145	97	47.00
Internet Explorer	MVanFrayen@LWL	atl-11460	52.68	223185.48	0.06	0.57	98624.92	4.66	72499	0	1761.09
3D Text Screen Saver	MVanFrayen@LWL	atl-11460	0.00	151368.36	5.73	0.39	23131.11	0.00	197760	0	18.80
Internet Explorer	jflatbush@LWL	atl-11471	39.62	80831.76	0.79	3.59	46820.79	17.64	5760	0	94.91
Symantec Service Framework		atl-11471	0.00	66438.12	1.08	0.79	12527.73	209.51	144261	0	16.00

Machine group: Dell win server 2008

Time range: October 1, 2011 12:00:00 AM to October 31, 2011 11:59:59 PM US/Eastern

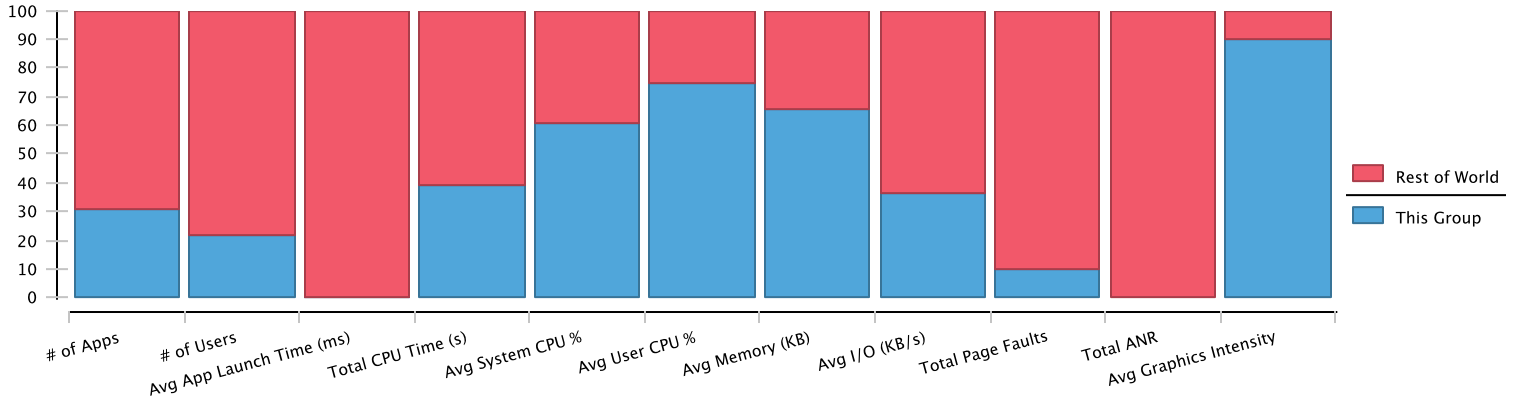
Machines in group: 21

Application	User	Machine	Avg Launch Time (ms)	Total CPU Time (s)	Avg System CPU %	Avg User CPU %	Avg Mem Size (KB)	Avg I/O (KB/s)	Total Page Faults	Total ANR	Avg Graphics Intensity
Host Process for Windows Services	SYSTEM@Local Directory	atl-11460	0.00	51516.60	0.09	0.05	29640.33	9.30	65150	0	4.00
Google Chrome	dkhare@Local Directory	tntatl-1223	49506325.19	42448.47	0.23	1.24	43517.48	3.99	59985	4	54.09
System	SYSTEM@Local Directory	atl-11471	0.00	41764.68	1.25	0.00	47.87	60.55	211	0	0.00
Google Chrome	DBoone@LWL	atl-11457	30.68	37645.44	0.06	0.24	47404.51	26.90	447466	0	94.43
System	SYSTEM@Local Directory	WXPX86-DK	0.00	32338.47	1.20	0.00	155.93	2.03	0	0	0.00
Microsoft Office Professional Plus 2010	jflatbush@LWL	atl-11471	38.86	31654.08	0.26	0.47	83112.46	102.63	10867	0	636.39
Firefox	jflatbush@LWL	atl-11471	37.84	30650.88	0.34	1.20	158102.63	38.86	35544	0	106.02

Machine group: Nissho Win7 Group 1

Time range: October 1, 2011 12:00:00 AM to October 31, 2011 11:59:59 PM US/Eastern

Machines in group: 6



Group Summary

Group	# of Applications	# of Machines	Avg Launch Time (ms)	Total CPU Time (s)	Avg System CPU %	Avg User CPU %	Avg Mem Size (KB)	Avg I/O (KB/s)	Total # Page Faults	Total # ANR	Avg Graphics Intensity
Rest of World	330	46	1405082.73	138.98	0.05	0.03	13218.93	12.59	1374.076	0	24.61
Nissho Win7 Group 1	148	5	470.04	90.37	0.08	0.10	25398.10	7.14	149.356	0	219.82

Summary - Applications Using Most CPU

Application	Group	# of Users	Avg Launch Time (ms)	Total CPU Time (s)	Avg System CPU %	Avg User CPU %	Avg Mem Size (KB)	Avg I/O (KB/s)	Total # Page Faults	Total # ANR	Avg Graphics Intensity
3D Text Screen Saver	Rest of World	0	0.00	0.00	0.00	0.00	0.00	0.00	0	0	0.00
	Nissho Win7 Group 1	1	0.00	764.49	5.73	0.39	23131.11	0.00	998.788	0	18.80
Internet Explorer	Rest of World	0	0.00	0.00	0.00	0.00	0.00	0.00	0	0	0.00
	Nissho Win7 Group 1	5	46.20	310.05	0.07	0.52	94314.08	4.66	122.239	0	1528.60
OUTLOOK	Rest of World	2	30.00	3.12	0.01	0.01	38858.35	0.20	1.103	0	782.62
	Nissho Win7 Group 1	4	101.45	251.09	0.20	0.28	125861.62	67.76	110.502	0	1326.12
join.me	Rest of World	0	0.00	0.00	0.00	0.00	0.00	0.00	0	0	0.00
	Nissho Win7 Group 1	1	15.00	235.63	3.11	2.94	68793.17	0.00	6.667	0	175.67
Microsoft Windows Search Indexer	Rest of World	0	0.00	0.00	0.00	0.00	0.00	0.00	0	0	0.00
	Nissho Win7 Group 1	1	0.00	194.93	0.01	0.70	22695.79	6.55	35.629	0	4.00
GoToMeeting	Rest of World	0	0.00	0.00	0.00	0.00	0.00	0.00	0	0	0.00
	Nissho Win7 Group 1	1	28.50	165.56	4.01	3.89	16672.50	0.00	492.25	0	78.25
QBHelp	Rest of World	0	0.00	0.00	0.00	0.00	0.00	0.00	0	0	0.00
	Nissho Win7 Group 1	1	0.00	162.14	0.04	1.28	36121.80	4.80	78.6	0	249.90
Desktop Window Manager	Rest of World	0	0.00	0.00	0.00	0.00	0.00	0.00	0	0	0.00
	Nissho Win7 Group 1	5	0.00	160.22	0.06	0.17	36213.23	0.00	1036.593	0	20.42
Cisco WebEx Service	Rest of World	0	0.00	0.00	0.00	0.00	0.00	0.00	0	0	0.00
	Nissho Win7 Group 1	3	18.09	153.00	0.40	0.24	114131.38	2.05	697.966	0	1362.09
System	Rest of World	0	0.00	0.00	0.00	0.00	0.00	0.00	0	0	0.00
	Nissho Win7 Group 1	1	0.00	134.80	0.21	0.00	73.08	3.02	49.897	0	0.00
ApMsgFwd	Rest of World	0	0.00	0.00	0.00	0.00	0.00	0.00	0	0	0.00
	Nissho Win7 Group 1	4	32.99	100.61	0.19	0.01	998.76	0.00	0	0	10.40
EXCEL	Rest of World	0	0.00	0.00	0.00	0.00	0.00	0.00	0	0	0.00
	Nissho Win7 Group 1	4	22.01	97.09	0.32	0.12	16156.29	1.94	54.097	0	367.90

Details - Individual Application Executions Using Most CPU

Machine group: Nissho Win7 Group 1

Time range: October 1, 2011 12:00:00 AM to October 31, 2011 11:59:59 PM US/Eastern

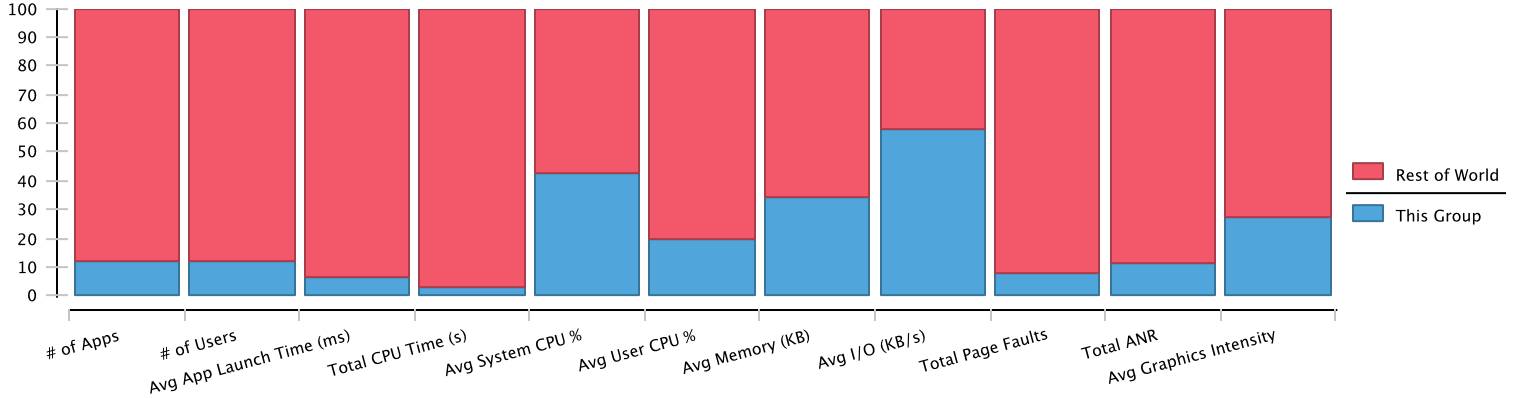
Machines in group: 6

Application	User	Machine	Avg Launch Time (ms)	Total CPU Time (s)	Avg System CPU %	Avg User CPU %	Avg Mem Size (KB)	Avg I/O (KB/s)	Total Page Faults	Total ANR	Avg Graphics Intensity
Internet Explorer	MVanFrayen@LWL	atl-11460	52.68	223185.48	0.06	0.57	98624.92	4.66	72499	0	1761.09
3D Text Screen Saver	MVanFrayen@LWL	atl-11460	0.00	151368.36	5.73	0.39	23131.11	0.00	197760	0	18.80
Host Process for Windows Services	SYSTEM@Local Directory	atl-11460	0.00	51516.60	0.09	0.05	29640.33	9.30	65150	0	4.00
Microsoft Windows Search Indexer	SYSTEM@Local Directory	jasonmattox-pc	0.00	48346.92	0.03	15.46	36255.28	8.64	1805	0	4.00
Google Chrome	DBoone@LWL	atl-11457	30.68	37645.44	0.06	0.24	47404.51	26.90	447466	0	94.43
OUTLOOK	MVanFrayen@LWL	atl-11460	147.41	30225.84	0.11	0.17	144499.11	77.48	15730	0	1536.20
System	SYSTEM@Local Directory	atl-11460	0.00	30055.44	0.28	0.00	55.57	2.61	80	0	0.00
Desktop Window Manager	MVanFrayen@LWL	atl-11460	0.00	19193.52	0.04	0.14	41586.27	0.00	155034	0	21.59
OUTLOOK	LWortman@LWL	atl-11459	24.97	18859.80	0.48	0.28	81014.82	23.78	5330	0	947.09
OUTLOOK	DBoone@LWL	atl-11457	17.17	17841.00	0.22	0.58	116771.95	94.02	8775	0	979.72
Internet Explorer	LWortman@LWL	atl-11459	16.31	11855.52	0.15	0.30	86119.80	5.44	18870	0	444.05
Host Process for Windows Services	SYSTEM@Local Directory	atl-11457	0.00	11361.36	0.18	0.08	39377.21	17.65	21063	0	4.00

Machine group: Nissho WinXP Group 1

Time range: October 1, 2011 12:00:00 AM to October 31, 2011 11:59:59 PM US/Eastern

Machines in group: 5



Group Summary

Group	# of Applications	# of Machines	Avg Launch Time (ms)	Total CPU Time (s)	Avg System CPU %	Avg User CPU %	Avg Mem Size (KB)	Avg I/O (KB/s)	Total # Page Faults	Total # ANR	Avg Graphics Intensity
Rest of World	391	47	1018793.41	201.41	0.05	0.04	14710.35	11.81	378.971	0	39.47
Nissho WinXP Group 1	52	4	72581.94	6.06	0.04	0.01	7681.26	16.14	32.253	0	14.63

Summary - Applications Using Most CPU

Application	Group	# of Users	Avg Launch Time (ms)	Total CPU Time (s)	Avg System CPU %	Avg User CPU %	Avg Mem Size (KB)	Avg I/O (KB/s)	Total # Page Faults	Total # ANR	Avg Graphics Intensity
NTVDMEXE	Rest of World	0	0.00	0.00	0.00	0.00	0.00	0.00	0	0	0.00
	Nissho WinXP Group 1	1	1800611.00	374.22	13.08	11.85	6854.00	42.00	2000	0	74.00
Windows® installer	Rest of World	0	0.00	0.00	0.00	0.00	0.00	0.00	0	0	0.00
	Nissho WinXP Group 1	1	0.00	89.28	0.65	1.31	10901.78	444.67	348.444	0	4.11
System	Rest of World	0	0.00	0.00	0.00	0.00	0.00	0.00	0	0	0.00
	Nissho WinXP Group 1	1	0.00	15.18	0.09	0.00	152.62	1.03	0.105	0	0.00
Symantec Endpoint Protection	Rest of World	0	0.00	0.00	0.00	0.00	0.00	0.00	0	0	0.00
	Nissho WinXP Group 1	2	1819.26	11.93	0.30	0.06	3550.30	75.82	21.874	0	24.87
HotFixInstaller	Rest of World	0	0.00	0.00	0.00	0.00	0.00	0.00	0	0	0.00
	Nissho WinXP Group 1	1	0.00	11.93	0.34	0.32	7082.25	1.00	17.25	0	4.00
LuCallBackProxy Module	Rest of World	0	0.00	0.00	0.00	0.00	0.00	0.00	0	0	0.00
	Nissho WinXP Group 1	1	0.00	11.86	2.69	1.26	3358.27	8036.90	125	0	8.40
Disk Defragmenter NTFS Module	Rest of World	0	0.00	0.00	0.00	0.00	0.00	0.00	0	0	0.00
	Nissho WinXP Group 1	1	0.00	7.92	0.87	0.03	11648.00	0.00	0	0	5.00
Apple Mobile Device Support	Rest of World	0	0.00	0.00	0.00	0.00	0.00	0.00	0	0	0.00
	Nissho WinXP Group 1	1	0.00	7.10	0.08	0.09	7395.83	0.00	0	0	4.00
LSA Shell (Export Version)	Rest of World	0	0.00	0.00	0.00	0.00	0.00	0.00	0	0	0.00
	Nissho WinXP Group 1	1	0.00	6.76	0.02	0.01	1986.67	0.96	7.885	0	4.02
Windows Update	Rest of World	0	0.00	0.00	0.00	0.00	0.00	0.00	0	0	0.00
	Nissho WinXP Group 1	1	0.00	6.38	0.24	0.27	57372.56	531.40	1299.667	0	4.08
VMware View Agent	Rest of World	0	0.00	0.00	0.00	0.00	0.00	0.00	0	0	0.00
	Nissho WinXP Group 1	3	0.00	6.32	0.03	0.01	8602.96	59.58	156.645	0	4.30
Windows Service Pack Setup	Rest of World	0	0.00	0.00	0.00	0.00	0.00	0.00	0	0	0.00
	Nissho WinXP Group 1	1	0.00	5.97	1.70	0.29	9216.00	1327.00	125	0	4.00

Details - Individual Application Executions Using Most CPU

Machine group: Nissho WinXP Group 1

Time range: October 1, 2011 12:00:00 AM to October 31, 2011 11:59:59 PM US/Eastern

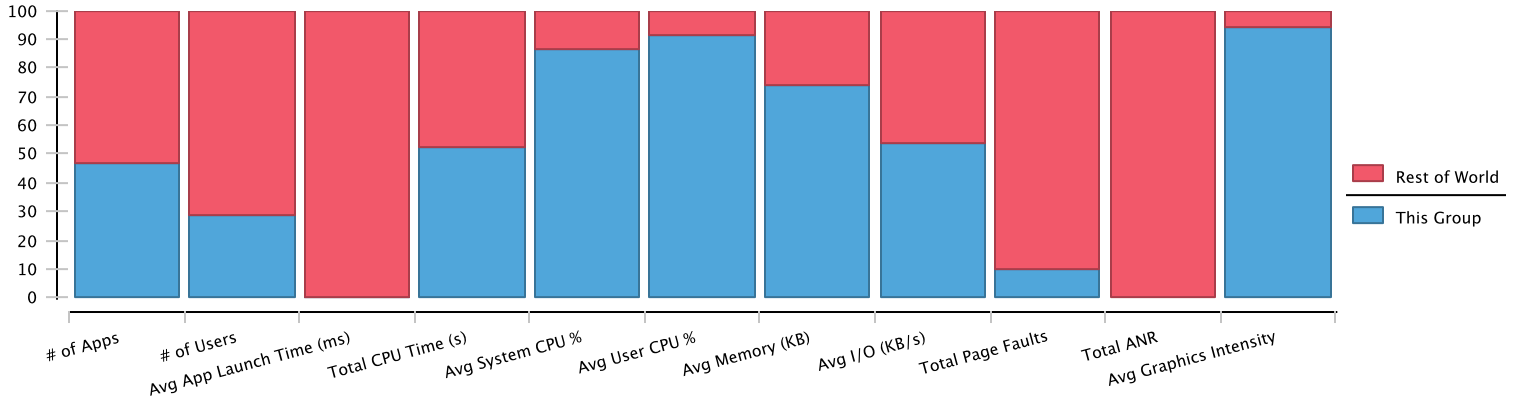
Machines in group: 5

Application	User	Machine	Avg Launch Time (ms)	Total CPU Time (s)	Avg System CPU %	Avg User CPU %	Avg Mem Size (KB)	Avg I/O (KB/s)	Total Page Faults	Total ANR	Avg Graphics Intensity
Symantec Endpoint Protection	SYSTEM@Local Directory	WXPX86-LW	0.00	27009.09	0.36	0.08	3674.76	91.88	46220	0	7.32
System	SYSTEM@Local Directory	WXPX86-LW	0.00	9788.43	0.34	0.00	190.31	4.09	78	0	0.00
Generic Host Process for Win32 Services	SYSTEM@Local Directory	WXPX86-LW	0.00	7733.31	0.07	0.02	16407.42	1.61	6880	0	6.24
VMware View Agent	SYSTEM@Local Directory	WXPX86-DD1-7	0.00	5344.56	0.03	0.01	5807.70	71.27	138424	0	4.00
VMware View Agent	SYSTEM@Local Directory	WXPX86-DD1-4	0.00	5296.89	0.03	0.01	6124.76	74.51	138863	0	4.00
Apple Mobile Device Support	SYSTEM@Local Directory	WXPX86-SG	0.00	5247.00	0.08	0.09	7395.83	0.00	0	0	4.00
VMware View Agent	SYSTEM@Local Directory	WXPX86-SG	0.00	4430.43	0.03	0.01	11160.88	82.87	138998	0	4.00
Generic Host Process for Win32 Services	SYSTEM@Local Directory	WXPX86-SG	0.00	4316.16	0.19	0.04	22658.97	1.04	3361	0	5.97
Connector ID	SYSTEM@Local Directory	WXPX86-LW	0.00	3608.43	0.07	0.00	10203.01	2.08	14045	0	4.00
Generic Host Process for Win32 Services	SYSTEM@Local Directory	WXPX86-DD1-7	0.00	3199.05	0.13	0.02	15456.09	1.06	3163	0	4.00
Generic Host Process for Win32 Services	SYSTEM@Local Directory	WXPX86-DD1-4	0.00	3174.36	0.13	0.03	15584.50	1.06	3215	0	4.00
VMware Tools	SYSTEM@Local Directory	WXPX86-LW	0.00	2070.54	0.05	0.00	6472.42	0.00	280	0	7.07

Machine group: Physical Machines

Time range: October 1, 2011 12:00:00 AM to October 31, 2011 11:59:59 PM US/Eastern

Machines in group: 15



Group Summary

Group	# of Applications	# of Machines	Avg Launch Time (ms)	Total CPU Time (s)	Avg System CPU %	Avg User CPU %	Avg Mem Size (KB)	Avg I/O (KB/s)	Total # Page Faults	Total # ANR	Avg Graphics Intensity
Rest of World	257	46	2104655.01	104.47	0.03	0.02	12167.67	12.08	2113.034	0	17.44
Physical Machines	227	5	361.70	115.70	0.23	0.22	34361.37	13.89	229.678	0	275.88

Summary - Applications Using Most CPU

Application	Group	# of Users	Avg Launch Time (ms)	Total CPU Time (s)	Avg System CPU %	Avg User CPU %	Avg Mem Size (KB)	Avg I/O (KB/s)	Total # Page Faults	Total # ANR	Avg Graphics Intensity
3D Text Screen Saver	Rest of World	0	0.00	0.00	0.00	0.00	0.00	0.00	0	0	0.00
	Physical Machines	1	0.00	764.49	5.73	0.39	23131.11	0.00	998.788	0	18.80
Internet Explorer	Rest of World	0	0.00	0.00	0.00	0.00	0.00	0.00	0	0	0.00
	Physical Machines	6	44.80	462.89	0.15	0.80	87793.47	5.73	149.383	0	1365.02
Cisco WebEx Service	Rest of World	0	0.00	0.00	0.00	0.00	0.00	0.00	0	0	0.00
	Physical Machines	5	29.28	443.63	1.73	0.86	122351.86	55.71	1205.385	0	1382.58
oxygenvfs	Rest of World	0	0.00	0.00	0.00	0.00	0.00	0.00	0	0	0.00
	Physical Machines	1	15.00	292.80	0.06	48.74	47284.00	1.00	0	0	0.00
Microsoft File Transfer Manager	Rest of World	0	0.00	0.00	0.00	0.00	0.00	0.00	0	0	0.00
	Physical Machines	1	31.00	231.42	1.47	3.32	4428.00	961.00	0	0	32.00
System	Rest of World	0	0.00	0.00	0.00	0.00	0.00	0.00	0	0	0.00
	Physical Machines	2	0.00	231.27	0.66	0.00	71.09	15.92	1.729	0	0.00
Microsoft Windows Search Protocol Host	Rest of World	0	0.00	0.00	0.00	0.00	0.00	0.00	0	0	0.00
	Physical Machines	5	0.00	195.77	0.36	0.55	3531.96	69.95	402.479	0	13.92
OUTLOOK	Rest of World	3	21.86	38.06	0.09	0.22	44385.83	1.71	11.808	0	816.41
	Physical Machines	3	105.25	189.24	0.20	0.26	129091.66	70.71	84.359	0	1346.41
QBHelp	Rest of World	0	0.00	0.00	0.00	0.00	0.00	0.00	0	0	0.00
	Physical Machines	1	0.00	162.14	0.04	1.28	36121.80	4.80	78.6	0	249.90
Windows@ installer	Rest of World	0	0.00	0.00	0.00	0.00	0.00	0.00	0	0	0.00
	Physical Machines	1	0.00	156.12	4.59	1.04	6901.50	741.56	459.5	0	4.00
Symantec Service Framework	Rest of World	0	0.00	0.00	0.00	0.00	0.00	0.00	0	0	0.00
	Physical Machines	0	0.00	140.76	1.08	0.79	12527.73	209.51	305.638	0	16.00
Plugin Container for Firefox	Rest of World	0	0.00	0.00	0.00	0.00	0.00	0.00	0	0	0.00
	Physical Machines	3	33.01	125.58	0.29	1.04	29744.50	5.08	49.084	0	23.29

Details - Individual Application Executions Using Most CPU

Application	User	Machine	Avg Launch Time (ms)	Total CPU Time (s)	Avg System CPU %	Avg User CPU %	Avg Mem Size (KB)	Avg I/O (KB/s)	Total Page Faults	Total ANR	Avg Graphics Intensity
Internet Explorer	MVanFrayen@LWL	atl-11460	52.68	223185.48	0.06	0.57	98624.92	4.66	72499	0	1761.09
3D Text Screen Saver	MVanFrayen@LWL	atl-11460	0.00	151368.36	5.73	0.39	23131.11	0.00	197760	0	18.80
Internet Explorer	jflatbush@LWL	atl-11471	39.62	80831.76	0.79	3.59	46820.79	17.64	5760	0	94.91
Symantec Service Framework		atl-11471	0.00	66438.12	1.08	0.79	12527.73	209.51	144261	0	16.00

Machine group: Physical Machines

Time range: October 1, 2011 12:00:00 AM to October 31, 2011 11:59:59 PM US/Eastern

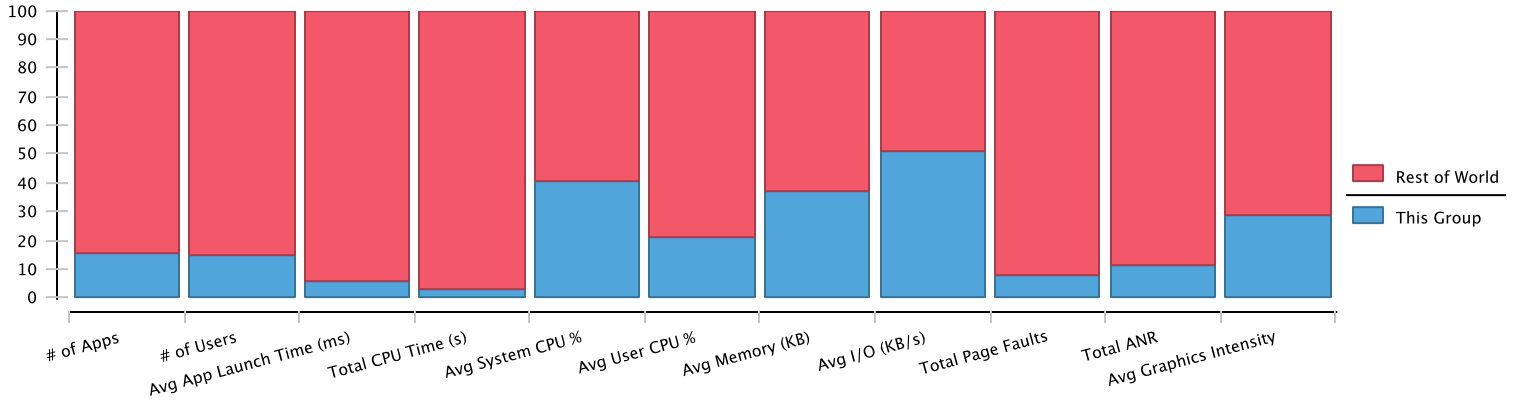
Machines in group: 15

Application	User	Machine	Avg Launch Time (ms)	Total CPU Time (s)	Avg System CPU %	Avg User CPU %	Avg Mem Size (KB)	Avg I/O (KB/s)	Total Page Faults	Total ANR	Avg Graphics Intensity
Host Process for Windows Services	SYSTEM@Local Directory	atl-11460	0.00	51516.60	0.09	0.05	29640.33	9.30	65150	0	4.00
System	SYSTEM@Local Directory	atl-11471	0.00	41764.68	1.25	0.00	47.87	60.55	211	0	0.00
Google Chrome	DBoone@LWL	atl-11457	30.68	37645.44	0.06	0.24	47404.51	26.90	447466	0	94.43
Microsoft Office Professional Plus 2010	jflatbush@LWL	atl-11471	38.86	31654.08	0.26	0.47	83112.46	102.63	10867	0	636.39
Firefox	jflatbush@LWL	atl-11471	37.84	30650.88	0.34	1.20	158102.63	38.86	35544	0	106.02
OUTLOOK	MVanFrayen@LWL	atl-11460	147.41	30225.84	0.11	0.17	144499.11	77.48	15730	0	1536.20
System	SYSTEM@Local Directory	atl-11460	0.00	30055.44	0.28	0.00	55.57	2.61	80	0	0.00
Host Process for Windows Services	SYSTEM@Local Directory	atl-11471	0.00	25249.56	0.31	0.25	33416.59	4.48	13543	0	4.00

Machine group: Terminal Services

Time range: October 1, 2011 12:00:00 AM to October 31, 2011 11:59:59 PM US/Eastern

Machines in group: 6



Group Summary

Group	# of Applications	# of Machines	Avg Launch Time (ms)	Total CPU Time (s)	Avg System CPU %	Avg User CPU %	Avg Mem Size (KB)	Avg I/O (KB/s)	Total # Page Faults	Total # ANR	Avg Graphics Intensity
Rest of World	390	47	1033961.70	202.09	0.05	0.04	14617.43	12.17	298.174	0	39.34
Terminal Services	71	4	63466.25	5.80	0.04	0.01	8672.45	12.75	25.376	0	16.03

Summary - Applications Using Most CPU

Application	Group	# of Users	Avg Launch Time (ms)	Total CPU Time (s)	Avg System CPU %	Avg User CPU %	Avg Mem Size (KB)	Avg I/O (KB/s)	Total # Page Faults	Total # ANR	Avg Graphics Intensity
NTVDM.EXE	Rest of World	0	0.00	0.00	0.00	0.00	0.00	0.00	0	0	0.00
	Terminal Services	1	1800611.00	374.22	13.08	11.85	6854.00	42.00	2000	0	74.00
Windows® installer	Rest of World	0	0.00	0.00	0.00	0.00	0.00	0.00	0	0	0.00
	Terminal Services	1	0.00	40.39	0.62	0.82	10704.29	502.57	396.571	0	4.14
System	Rest of World	0	0.00	0.00	0.00	0.00	0.00	0.00	0	0	0.00
	Terminal Services	1	0.00	14.93	0.10	0.00	175.73	1.20	0.106	0	0.00
Symantec Endpoint Protection	Rest of World	0	0.00	0.00	0.00	0.00	0.00	0.00	0	0	0.00
	Terminal Services	2	1819.26	11.93	0.30	0.06	3550.30	75.82	21.874	0	24.87
LuCallBackProxy Module	Rest of World	0	0.00	0.00	0.00	0.00	0.00	0.00	0	0	0.00
	Terminal Services	1	0.00	11.86	2.69	1.26	3358.27	8036.90	125	0	8.40
Firefox	Rest of World	0	0.00	0.00	0.00	0.00	0.00	0.00	0	0	0.00
	Terminal Services	1	46.00	10.21	0.03	0.24	72724.36	1.37	5.167	0	347.47
Apple Mobile Device Support	Rest of World	0	0.00	0.00	0.00	0.00	0.00	0.00	0	0	0.00
	Terminal Services	1	0.00	7.10	0.08	0.09	7395.83	0.00	0	0	4.00
HotFixInstaller	Rest of World	0	0.00	0.00	0.00	0.00	0.00	0.00	0	0	0.00
	Terminal Services	1	0.00	6.57	0.35	0.28	7107.00	1.00	13	0	4.00
Connector ID	Rest of World	0	0.00	0.00	0.00	0.00	0.00	0.00	0	0	0.00
	Terminal Services	1	0.00	6.11	0.03	0.00	8897.47	1.19	55.777	0	4.00
Windows Service Pack Setup	Rest of World	0	0.00	0.00	0.00	0.00	0.00	0.00	0	0	0.00
	Terminal Services	1	0.00	5.97	1.70	0.29	9216.00	1327.00	125	0	4.00
LSA Shell (Export Version)	Rest of World	0	0.00	0.00	0.00	0.00	0.00	0.00	0	0	0.00
	Terminal Services	1	0.00	5.63	0.03	0.01	2048.80	0.94	5.948	0	4.03
VMware View Agent	Rest of World	0	0.00	0.00	0.00	0.00	0.00	0.00	0	0	0.00
	Terminal Services	3	0.00	4.98	0.02	0.01	11022.36	45.53	119.675	0	4.35

Details - Individual Application Executions Using Most CPU

Application	User	Machine	Avg Launch Time (ms)	Total CPU Time (s)	Avg System CPU %	Avg User CPU %	Avg Mem Size (KB)	Avg I/O (KB/s)	Total Page Faults	Total ANR	Avg Graphics Intensity
Symantec Endpoint Protection	SYSTEM@Local Directory	WXPX86-LW	0.00	27009.09	0.36	0.08	3674.76	91.88	46220	0	7.32
System	SYSTEM@Local Directory	WXPX86-LW	0.00	9788.43	0.34	0.00	190.31	4.09	78	0	0.00
Generic Host Process for Win32 Services	SYSTEM@Local Directory	WXPX86-LW	0.00	7733.31	0.07	0.02	16407.42	1.61	6880	0	6.24

Machine group: Terminal Services

Time range: October 1, 2011 12:00:00 AM to October 31, 2011 11:59:59 PM US/Eastern

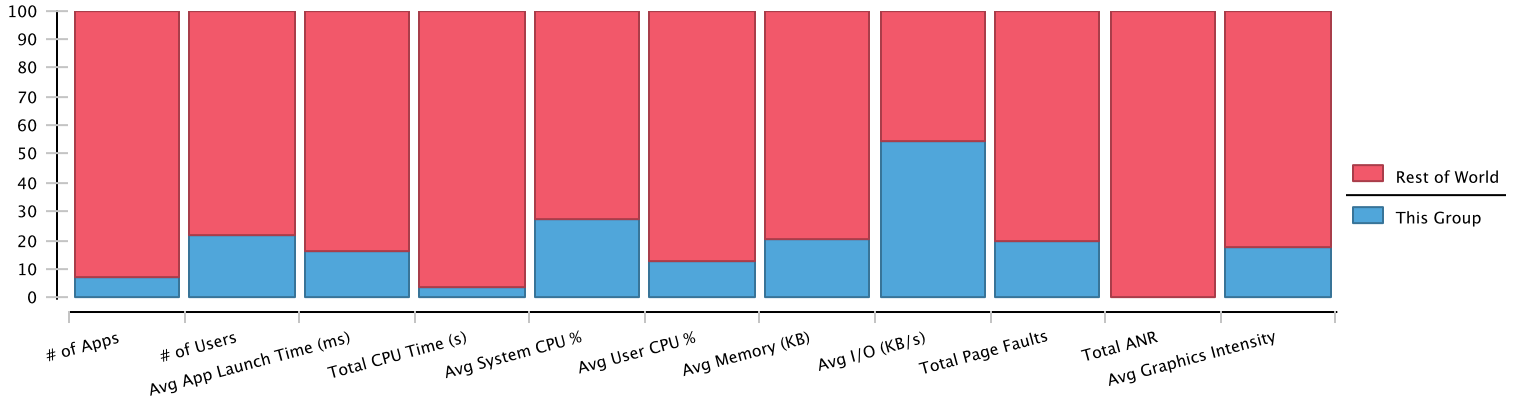
Machines in group: 6

Application	User	Machine	Avg Launch Time (ms)	Total CPU Time (s)	Avg System CPU %	Avg User CPU %	Avg Mem Size (KB)	Avg I/O (KB/s)	Total Page Faults	Total ANR	Avg Graphics Intensity
Apple Mobile Device Support	SYSTEM@Local Directory	WXPX86-SG	0.00	5247.00	0.08	0.09	7395.83	0.00	0	0	4.00
VMware View Agent	SYSTEM@Local Directory	WXPX86-FL0-5	0.00	5155.92	0.03	0.01	9808.18	71.25	138308	0	4.00
VMware View Agent	SYSTEM@Local Directory	WXPX86-SG	0.00	4430.43	0.03	0.01	11160.88	82.87	138998	0	4.00
Generic Host Process for Win32 Services	SYSTEM@Local Directory	WXPX86-SG	0.00	4316.16	0.19	0.04	22658.97	1.04	3361	0	5.97
Connector ID	SYSTEM@Local Directory	WXPX86-LW	0.00	3608.43	0.07	0.00	10203.01	2.08	14045	0	4.00
Host Process for Windows Services	SYSTEM@Local Directory	W7PX86-TR	0.00	3239.01	0.04	0.03	10773.16	3.70	9373	0	4.00
Generic Host Process for Win32 Services	SYSTEM@Local Directory	WXPX86-FL0-5	0.00	3234.39	0.12	0.03	21183.43	1.04	1413	0	4.00
Connector ID	SYSTEM@Local Directory	W7PX86-TR	0.00	2453.43	0.04	0.01	6797.19	2.80	34639	0	4.00
VMware Tools	SYSTEM@Local Directory	WXPX86-LW	0.00	2070.54	0.05	0.00	6472.42	0.00	280	0	7.07

Machine group: VMware Host labvd01.lwl.corp

Time range: October 1, 2011 12:00:00 AM to October 31, 2011 11:59:59 PM US/Eastern

Machines in group: 12



Group Summary

Group	# of Applications	# of Machines	Avg Launch Time (ms)	Total CPU Time (s)	Avg System CPU %	Avg User CPU %	Avg Mem Size (KB)	Avg I/O (KB/s)	Total # Page Faults	Total # ANR	Avg Graphics Intensity
Rest of World	406	41	930918.22	202.81	0.06	0.04	16835.01	11.76	384.789	0	44.73
VMware Host labvd01.lwl.corp	30	10	180537.60	8.03	0.02	0.01	4339.62	13.86	93.851	0	9.74

Summary - Applications Using Most CPU

Application	Group	# of Users	Avg Launch Time (ms)	Total CPU Time (s)	Avg System CPU %	Avg User CPU %	Avg Mem Size (KB)	Avg I/O (KB/s)	Total # Page Faults	Total # ANR	Avg Graphics Intensity
Windows® installer	Rest of World	0	0.00	0.00	0.00	0.00	0.00	0.00	0	0	0.00
	VMware Host labvd01.lwl.corp	1	0.00	211.73	0.70	1.60	10704.04	528.74	987.391	0	4.00
Firefox	Rest of World	0	0.00	0.00	0.00	0.00	0.00	0.00	0	0	0.00
	VMware Host labvd01.lwl.corp	3	2500.00	171.61	1.13	2.33	118765.00	29.00	1005.75	0	423.00
HotFixInstaller	Rest of World	0	0.00	0.00	0.00	0.00	0.00	0.00	0	0	0.00
	VMware Host labvd01.lwl.corp	1	0.00	35.10	0.40	0.38	7074.20	0.80	78.3	0	4.00
VMware View Agent	Rest of World	0	0.00	0.00	0.00	0.00	0.00	0.00	0	0	0.00
	VMware Host labvd01.lwl.corp	5	0.00	19.09	0.03	0.01	6165.20	75.44	496.414	0	4.01
Plugin Container for Firefox	Rest of World	0	0.00	0.00	0.00	0.00	0.00	0.00	0	0	0.00
	VMware Host labvd01.lwl.corp	2	0.00	16.99	0.10	0.37	19591.75	9.25	15.75	0	11.00
LSA Shell (Export Version)	Rest of World	0	0.00	0.00	0.00	0.00	0.00	0.00	0	0	0.00
	VMware Host labvd01.lwl.corp	1	0.00	15.04	0.02	0.01	1901.62	1.00	19.5	0	4.66
Windows Update	Rest of World	0	0.00	0.00	0.00	0.00	0.00	0.00	0	0	0.00
	VMware Host labvd01.lwl.corp	1	0.00	13.83	0.19	0.25	44042.39	357.59	2452.13	0	4.02
Generic Host Process for Win32 Services	Rest of World	0	0.00	0.00	0.00	0.00	0.00	0.00	0	0	0.00
	VMware Host labvd01.lwl.corp	3	0.00	8.04	0.05	0.01	6381.83	0.37	7.532	0	4.61
VMware Tools	Rest of World	0	0.00	0.00	0.00	0.00	0.00	0.00	0	0	0.00
	VMware Host labvd01.lwl.corp	5	31.00	7.24	0.01	0.00	2403.77	0.00	0.015	0	6.23
Client Server Runtime Process	Rest of World	0	0.00	0.00	0.00	0.00	0.00	0.00	0	0	0.00
	VMware Host labvd01.lwl.corp	1	0.00	6.74	0.00	0.01	1484.66	0.00	0.093	0	62.00
.NET Runtime Optimization Service	Rest of World	0	0.00	0.00	0.00	0.00	0.00	0.00	0	0	0.00
	VMware Host labvd01.lwl.corp	1	0.00	6.33	0.12	0.04	4208.91	0.27	24.545	0	4.00
System	Rest of World	0	0.00	0.00	0.00	0.00	0.00	0.00	0	0	0.00
	VMware Host labvd01.lwl.corp	1	0.00	6.18	0.01	0.00	87.23	0.01	0.001	0	0.00

Details - Individual Application Executions Using Most CPU

Machine group: VMware Host labvd01.lwl.corp

Time range: October 1, 2011 12:00:00 AM to October 31, 2011 11:59:59 PM US/Eastern

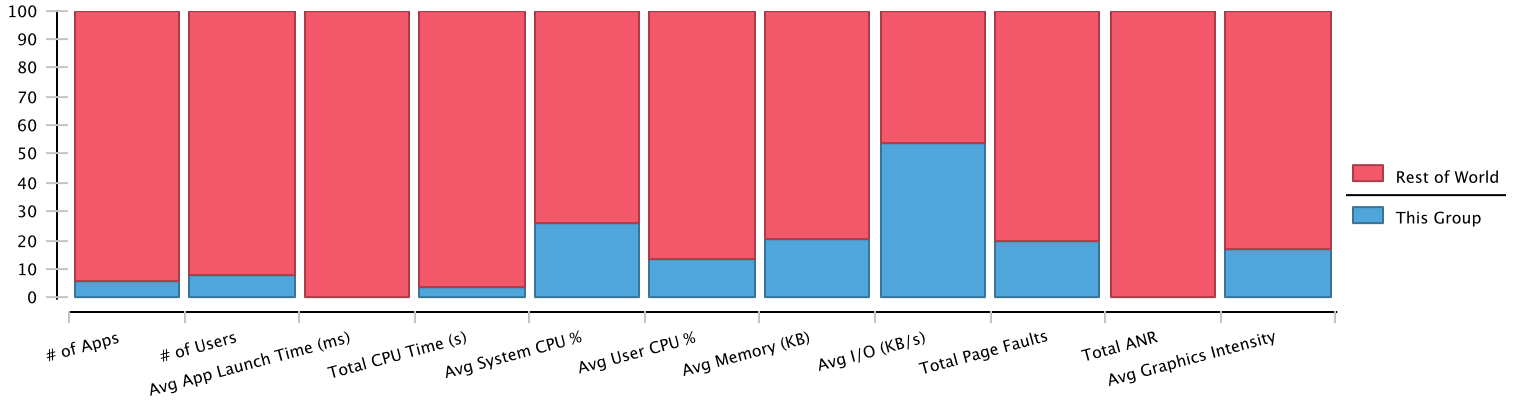
Machines in group: 12

Application	User	Machine	Avg Launch Time (ms)	Total CPU Time (s)	Avg System CPU %	Avg User CPU %	Avg Mem Size (KB)	Avg I/O (KB/s)	Total Page Faults	Total ANR	Avg Graphics Intensity
VMware View Agent	SYSTEM@Local Directory	WXPX86-FL2-2	0.00	5380.71	0.04	0.01	6251.89	79.32	138740	0	4.00
VMware View Agent	SYSTEM@Local Directory	WXPX86-FL2-8	0.00	5365.77	0.03	0.01	5974.04	71.22	138611	0	4.00
VMware View Agent	SYSTEM@Local Directory	WXPX86-FL2-10	0.00	5353.05	0.03	0.01	6243.21	77.90	138594	0	4.00
VMware View Agent	SYSTEM@Local Directory	WXPX86-FL2-9	0.00	5349.60	0.03	0.01	6227.76	76.93	138698	0	4.00
VMware View Agent	SYSTEM@Local Directory	WXPX86-FL2-4	0.00	5338.02	0.04	0.01	6288.66	79.30	138572	0	4.00
VMware View Agent	SYSTEM@Local Directory	WXPX86-FL2-3	0.00	5320.38	0.03	0.01	5870.70	71.27	138624	0	4.00
VMware View Agent	SYSTEM@Local Directory	WXPX86-FL2-1	0.00	5319.99	0.03	0.01	6157.97	71.30	138877	0	4.01
VMware View Agent	SYSTEM@Local Directory	WXPX86-FL2-5	0.00	5317.71	0.03	0.01	5893.92	71.20	138661	0	4.00
VMware View Agent	SYSTEM@Local Directory	WXPX86-FL2-6	0.00	5315.10	0.04	0.01	6458.50	79.71	138501	0	4.00
VMware View Agent	SYSTEM@Local Directory	WXPX86-FL2-7	0.00	5273.58	0.03	0.01	6368.95	78.58	138754	0	4.00
Generic Host Process for Win32 Services	SYSTEM@Local Directory	WXPX86-FL2-9	0.00	3632.07	0.14	0.04	15405.79	1.05	3355	0	6.51
Generic Host Process for Win32 Services	SYSTEM@Local Directory	WXPX86-FL2-10	0.00	3526.08	0.13	0.04	15672.29	1.04	3320	0	6.24

Machine group: VMware Host labvd02.lwl.corp

Time range: October 1, 2011 12:00:00 AM to October 31, 2011 11:59:59 PM US/Eastern

Machines in group: 12



Group Summary

Group	# of Applications	# of Machines	Avg Launch Time (ms)	Total CPU Time (s)	Avg System CPU %	Avg User CPU %	Avg Mem Size (KB)	Avg I/O (KB/s)	Total # Page Faults	Total # ANR	Avg Graphics Intensity
Rest of World	408	41	930769.20	202.96	0.06	0.04	16876.80	11.78	383.77	0	45.40
VMware Host labvd02.lwl.corp	26	10	0.00	8.08	0.02	0.01	4252.43	13.79	93.602	0	9.26

Summary - Applications Using Most CPU

Application	Group	# of Users	Avg Launch Time (ms)	Total CPU Time (s)	Avg System CPU %	Avg User CPU %	Avg Mem Size (KB)	Avg I/O (KB/s)	Total # Page Faults	Total # ANR	Avg Graphics Intensity
Windows® installer	Rest of World	0	0.00	0.00	0.00	0.00	0.00	0.00	0	0	0.00
	VMware Host labvd02.lwl.corp	1	0.00	242.86	0.93	2.49	12125.80	702.95	1372.5	0	4.00
HotFixInstaller	Rest of World	0	0.00	0.00	0.00	0.00	0.00	0.00	0	0	0.00
	VMware Host labvd02.lwl.corp	1	0.00	20.30	0.41	0.40	7111.50	1.33	57.5	0	4.00
VMware View Agent	Rest of World	0	0.00	0.00	0.00	0.00	0.00	0.00	0	0	0.00
	VMware Host labvd02.lwl.corp	1	0.00	19.14	0.03	0.01	6044.94	74.99	493.476	0	4.00
Disk Defragmenter NTFS Module	Rest of World	0	0.00	0.00	0.00	0.00	0.00	0.00	0	0	0.00
	VMware Host labvd02.lwl.corp	1	0.00	17.97	0.99	0.02	11620.00	0.00	0	0	5.00
Windows Update	Rest of World	0	0.00	0.00	0.00	0.00	0.00	0.00	0	0	0.00
	VMware Host labvd02.lwl.corp	1	0.00	14.71	0.21	0.26	49801.51	395.21	2692.418	0	4.00
LSA Shell (Export Version)	Rest of World	0	0.00	0.00	0.00	0.00	0.00	0.00	0	0	0.00
	VMware Host labvd02.lwl.corp	1	0.00	14.55	0.02	0.01	2004.01	1.00	20.853	0	4.00
Generic Host Process for Win32 Services	Rest of World	0	0.00	0.00	0.00	0.00	0.00	0.00	0	0	0.00
	VMware Host labvd02.lwl.corp	3	0.00	9.11	0.05	0.01	6668.97	0.39	8.103	0	4.10
HOTIRON Hotfix Installer	Rest of World	0	0.00	0.00	0.00	0.00	0.00	0.00	0	0	0.00
	VMware Host labvd02.lwl.corp	1	0.00	8.98	0.43	0.40	7187.33	0.67	6	0	4.00
Client Server Runtime Process	Rest of World	0	0.00	0.00	0.00	0.00	0.00	0.00	0	0	0.00
	VMware Host labvd02.lwl.corp	1	0.00	8.67	0.00	0.01	1440.03	0.00	0.093	0	62.00
System	Rest of World	0	0.00	0.00	0.00	0.00	0.00	0.00	0	0	0.00
	VMware Host labvd02.lwl.corp	1	0.00	6.86	0.01	0.00	86.69	0.00	0	0	0.00
Windows NT Logon Application	Rest of World	0	0.00	0.00	0.00	0.00	0.00	0.00	0	0	0.00
	VMware Host labvd02.lwl.corp	1	0.00	6.52	0.01	0.01	5915.11	0.00	10	0	42.00
.NET Runtime Optimization Service	Rest of World	0	0.00	0.00	0.00	0.00	0.00	0.00	0	0	0.00
	VMware Host labvd02.lwl.corp	1	0.00	5.77	0.11	0.03	4050.31	0.15	19.231	0	4.00

Machine group: VMware Host labvd02.lwl.corp

Time range: October 1, 2011 12:00:00 AM to October 31, 2011 11:59:59 PM US/Eastern

Machines in group: 12

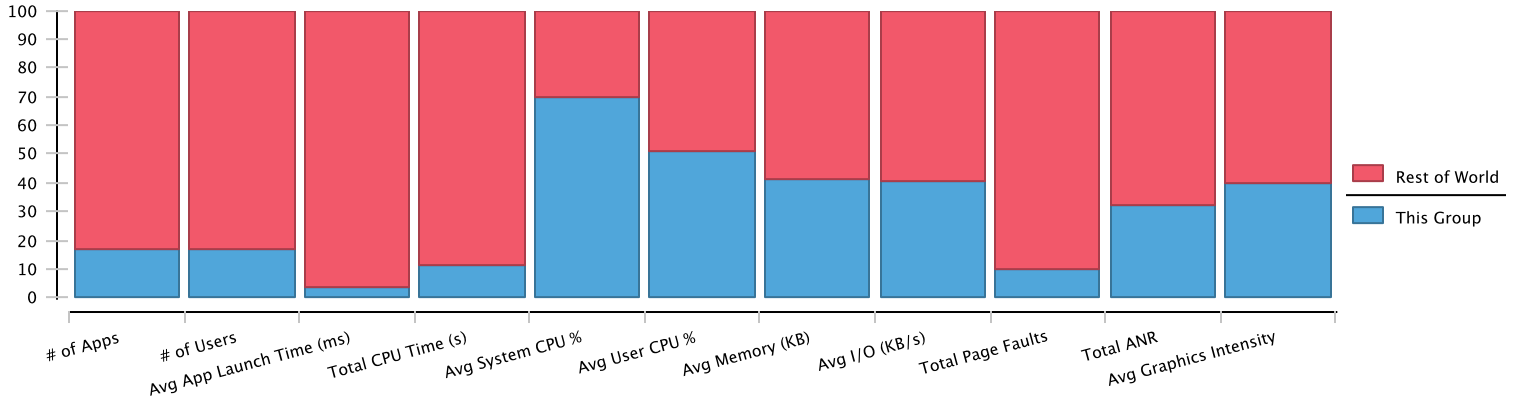
Details - Individual Application Executions Using Most CPU

Application	User	Machine	Avg Launch Time (ms)	Total CPU Time (s)	Avg System CPU %	Avg User CPU %	Avg Mem Size (KB)	Avg I/O (KB/s)	Total Page Faults	Total ANR	Avg Graphics Intensity
VMware View Agent	SYSTEM@Local Directory	WXPX86-DD1-5	0.00	5486.37	0.04	0.01	6692.55	82.52	138732	0	4.00
VMware View Agent	SYSTEM@Local Directory	WXPX86-DD1-9	0.00	5459.73	0.04	0.01	6214.77	88.82	138698	0	4.00
VMware View Agent	SYSTEM@Local Directory	WXPX86-DD1-10	0.00	5455.74	0.04	0.01	6014.86	74.35	138899	0	4.00
VMware View Agent	SYSTEM@Local Directory	WXPX86-DD1-6	0.00	5412.09	0.03	0.01	5791.79	71.67	138599	0	4.00
VMware View Agent	SYSTEM@Local Directory	WXPX86-DD1-2	0.00	5393.85	0.03	0.01	5893.66	71.35	138565	0	4.00
VMware View Agent	SYSTEM@Local Directory	WXPX86-DD1-1	0.00	5358.09	0.03	0.01	6195.84	73.88	138784	0	4.00
VMware View Agent	SYSTEM@Local Directory	WXPX86-DD1-7	0.00	5351.46	0.03	0.01	5807.26	71.27	138613	0	4.00
VMware View Agent	SYSTEM@Local Directory	WXPX86-DD1-4	0.00	5296.89	0.03	0.01	6124.76	74.51	138863	0	4.00
VMware View Agent	SYSTEM@Local Directory	WXPX86-DD1-8	0.00	5295.00	0.03	0.01	5827.10	71.25	138639	0	4.00
VMware View Agent	SYSTEM@Local Directory	WXPX86-DD1-3	0.00	5288.94	0.03	0.01	6012.74	73.94	138424	0	4.00
Generic Host Process for Win32 Services	SYSTEM@Local Directory	WXPX86-DD1-1	0.00	4195.71	0.12	0.06	15358.84	1.04	3284	0	4.00
Generic Host Process for Win32 Services	SYSTEM@Local Directory	WXPX86-DD1-5	0.00	4049.94	0.12	0.05	15579.52	1.05	3481	0	4.00

Machine group: VMware Host labvd03.lwl.corp

Time range: October 1, 2011 12:00:00 AM to October 31, 2011 11:59:59 PM US/Eastern

Machines in group: 6



Group Summary

Group	# of Applications	# of Machines	Avg Launch Time (ms)	Total CPU Time (s)	Avg System CPU %	Avg User CPU %	Avg Mem Size (KB)	Avg I/O (KB/s)	Total # Page Faults	Total # ANR	Avg Graphics Intensity
Rest of World	386	46	1128406.67	180.00	0.04	0.04	14573.86	12.72	230,904	0	38.65
VMware Host labvd03.lwl.corp	79	5	38963.32	23.68	0.10	0.04	10081.04	8.79	25,098	0	25.25

Summary - Applications Using Most CPU

Application	Group	# of Users	Avg Launch Time (ms)	Total CPU Time (s)	Avg System CPU %	Avg User CPU %	Avg Mem Size (KB)	Avg I/O (KB/s)	Total # Page Faults	Total # ANR	Avg Graphics Intensity
Dropbox	Rest of World	0	0.00	0.00	0.00	0.00	0.00	0.00	0	0	0.00
	VMware Host labvd03.lwl.corp	1	10696.27	537.62	10.35	4.59	38799.21	2.66	70.372	0	47.00
NTVDM.EXE	Rest of World	0	0.00	0.00	0.00	0.00	0.00	0.00	0	0	0.00
	VMware Host labvd03.lwl.corp	1	1800611.00	374.22	13.08	11.85	6854.00	42.00	2000	0	74.00
System	Rest of World	0	0.00	0.00	0.00	0.00	0.00	0.00	0	0	0.00
	VMware Host labvd03.lwl.corp	1	0.00	58.64	0.32	0.00	171.72	1.36	0.106	0	0.00
Windows@ installer	Rest of World	0	0.00	0.00	0.00	0.00	0.00	0.00	0	0	0.00
	VMware Host labvd03.lwl.corp	1	0.00	46.53	0.79	1.41	11379.75	430.38	402	0	4.13
Windows Explorer	Rest of World	0	0.00	0.00	0.00	0.00	0.00	0.00	0	0	0.00
	VMware Host labvd03.lwl.corp	4	809.80	19.27	0.10	0.02	13871.91	0.13	24,513	0	231.51
MsMpEng	Rest of World	2	0.00	79.73	0.11	0.24	53160.82	182.89	176,093	0	4.00
	VMware Host labvd03.lwl.corp	1	0.00	14.49	0.15	0.26	60798.66	46.26	14,488	0	4.00
Symantec Endpoint Protection	Rest of World	0	0.00	0.00	0.00	0.00	0.00	0.00	0	0	0.00
	VMware Host labvd03.lwl.corp	2	1819.26	11.93	0.30	0.06	3550.30	75.82	21,874	0	24.87
LuCallBackProxy Module	Rest of World	0	0.00	0.00	0.00	0.00	0.00	0.00	0	0	0.00
	VMware Host labvd03.lwl.corp	1	0.00	11.86	2.69	1.26	3358.27	8036.90	125	0	8.40
Windows Update	Rest of World	0	0.00	0.00	0.00	0.00	0.00	0.00	0	0	0.00
	VMware Host labvd03.lwl.corp	3	0.00	7.95	0.27	0.35	69700.94	657.79	1591,226	0	4.31
Connector ID	Rest of World	0	0.00	0.00	0.00	0.00	0.00	0.00	0	0	0.00
	VMware Host labvd03.lwl.corp	1	0.00	7.14	0.03	0.00	9175.39	1.00	79,809	0	4.00
Apple Mobile Device Support	Rest of World	0	0.00	0.00	0.00	0.00	0.00	0.00	0	0	0.00
	VMware Host labvd03.lwl.corp	1	0.00	7.10	0.08	0.09	7395.83	0.00	0	0	4.00
Generic Host Process for Win32 Services	Rest of World	0	0.00	0.00	0.00	0.00	0.00	0.00	0	0	0.00
	VMware Host labvd03.lwl.corp	3	0.00	6.06	0.06	0.02	11822.52	0.60	5.63	0	5.09

Details - Individual Application Executions Using Most CPU

Machine group: VMware Host labvd03.lwl.corp

Time range: October 1, 2011 12:00:00 AM to October 31, 2011 11:59:59 PM US/Eastern

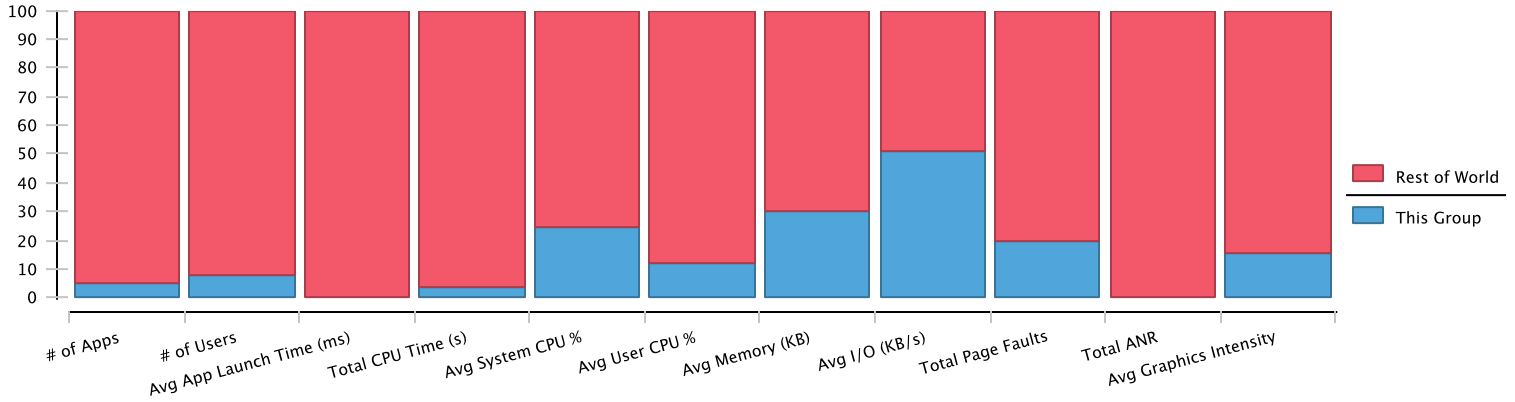
Machines in group: 6

Application	User	Machine	Avg Launch Time (ms)	Total CPU Time (s)	Avg System CPU %	Avg User CPU %	Avg Mem Size (KB)	Avg I/O (KB/s)	Total Page Faults	Total ANR	Avg Graphics Intensity
Dropbox	DKhare@LWL	WXPX86-DK	10696.27	253221.18	10.35	4.59	38799.21	2.66	33145	97	47.00
System	SYSTEM@Local Directory	WXPX86-DK	0.00	32338.47	1.20	0.00	155.93	2.03	0	0	0.00
Symantec Endpoint Protection	SYSTEM@Local Directory	WXPX86-LW	0.00	27009.09	0.36	0.08	3674.76	91.88	46220	0	7.32
MsMpEng	SYSTEM@Local Directory	WXPX86-DK	0.00	10722.18	0.15	0.26	60798.66	46.26	10721	0	4.00
System	SYSTEM@Local Directory	WXPX86-LW	0.00	9788.43	0.34	0.00	190.31	4.09	78	0	0.00
Generic Host Process for Win32 Services	SYSTEM@Local Directory	WXPX86-LW	0.00	7733.31	0.07	0.02	16407.42	1.61	6880	0	6.24
Windows Explorer	DKhare@LWL	WXPX86-DK	704.47	7072.98	0.32	0.06	20913.74	0.01	7991	0	330.11
Apple Mobile Device Support	SYSTEM@Local Directory	WXPX86-SG	0.00	5247.00	0.08	0.09	7395.83	0.00	0	0	4.00
VMware View Agent	SYSTEM@Local Directory	WXPX86-SG	0.00	4430.43	0.03	0.01	11160.88	82.87	138998	0	4.00
Generic Host Process for Win32 Services	SYSTEM@Local Directory	WXPX86-SG	0.00	4316.16	0.19	0.04	22658.97	1.04	3361	0	5.97
Generic Host Process for Win32 Services	SYSTEM@Local Directory	WXPX86-SR	0.00	3942.48	0.13	0.05	21872.34	1.04	3245	0	5.38
Connector ID	SYSTEM@Local Directory	WXPX86-LW	0.00	3608.43	0.07	0.00	10203.01	2.08	14045	0	4.00

Machine group: VMware Host labvd04.lwl.corp

Time range: October 1, 2011 12:00:00 AM to October 31, 2011 11:59:59 PM US/Eastern

Machines in group: 13



Group Summary

Group	# of Applications	# of Machines	Avg Launch Time (ms)	Total CPU Time (s)	Avg System CPU %	Avg User CPU %	Avg Mem Size (KB)	Avg I/O (KB/s)	Total # Page Faults	Total # ANR	Avg Graphics Intensity
Rest of World	409	41	930473.53	207.53	0.06	0.05	16260.76	12.11	345.367	0	46.57
VMware Host labvd04.lwl.corp	23	10	0.00	7.70	0.02	0.01	7081.22	12.60	84.236	0	8.54

Summary - Applications Using Most CPU

Application	Group	# of Users	Avg Launch Time (ms)	Total CPU Time (s)	Avg System CPU %	Avg User CPU %	Avg Mem Size (KB)	Avg I/O (KB/s)	Total # Page Faults	Total # ANR	Avg Graphics Intensity
Windows® installer	Rest of World	0	0.00	0.00	0.00	0.00	0.00	0.00	0	0	0.00
	VMware Host labvd04.lwl.corp	1	0.00	117.38	0.76	1.02	10858.28	722.61	1200.556	0	4.00
HotFixInstaller	Rest of World	0	0.00	0.00	0.00	0.00	0.00	0.00	0	0	0.00
	VMware Host labvd04.lwl.corp	1	0.00	32.37	0.40	0.35	7104.22	1.22	86	0	4.00
LSA Shell (Export Version)	Rest of World	0	0.00	0.00	0.00	0.00	0.00	0.00	0	0	0.00
	VMware Host labvd04.lwl.corp	1	0.00	19.38	0.03	0.01	1877.32	1.00	19.577	0	4.00
VMware View Agent	Rest of World	0	0.00	0.00	0.00	0.00	0.00	0.00	0	0	0.00
	VMware Host labvd04.lwl.corp	1	0.00	16.76	0.03	0.01	9831.62	71.25	468.748	0	4.00
.NET Runtime Optimization Service	Rest of World	0	0.00	0.00	0.00	0.00	0.00	0.00	0	0	0.00
	VMware Host labvd04.lwl.corp	1	0.00	9.72	0.15	0.05	4899.80	1.30	40	0	4.00
Client Server Runtime Process	Rest of World	0	0.00	0.00	0.00	0.00	0.00	0.00	0	0	0.00
	VMware Host labvd04.lwl.corp	1	0.00	8.53	0.00	0.01	3338.57	0.00	0.047	0	62.00
Generic Host Process for Win32 Services	Rest of World	0	0.00	0.00	0.00	0.00	0.00	0.00	0	0	0.00
	VMware Host labvd04.lwl.corp	3	0.00	7.54	0.04	0.01	9609.72	0.35	2.913	0	4.00
VMware Tools	Rest of World	0	0.00	0.00	0.00	0.00	0.00	0.00	0	0	0.00
	VMware Host labvd04.lwl.corp	1	0.00	6.57	0.01	0.00	5353.45	0.00	0.009	0	5.34
System	Rest of World	0	0.00	0.00	0.00	0.00	0.00	0.00	0	0	0.00
	VMware Host labvd04.lwl.corp	1	0.00	6.47	0.01	0.00	236.00	0.00	0	0	0.00
Windows Update	Rest of World	0	0.00	0.00	0.00	0.00	0.00	0.00	0	0	0.00
	VMware Host labvd04.lwl.corp	1	0.00	6.26	0.09	0.12	12512.47	50.17	233.404	0	4.00
Windows NT Logon Application	Rest of World	0	0.00	0.00	0.00	0.00	0.00	0.00	0	0	0.00
	VMware Host labvd04.lwl.corp	1	0.00	5.51	0.01	0.01	12551.72	0.00	10	0	42.00
Services and Controller app	Rest of World	0	0.00	0.00	0.00	0.00	0.00	0.00	0	0	0.00
	VMware Host labvd04.lwl.corp	1	0.00	3.52	0.00	0.00	4817.04	0.28	0.298	0	4.00

Machine group: VMware Host labvd04.lwl.corp

Time range: October 1, 2011 12:00:00 AM to October 31, 2011 11:59:59 PM US/Eastern

Machines in group: 13

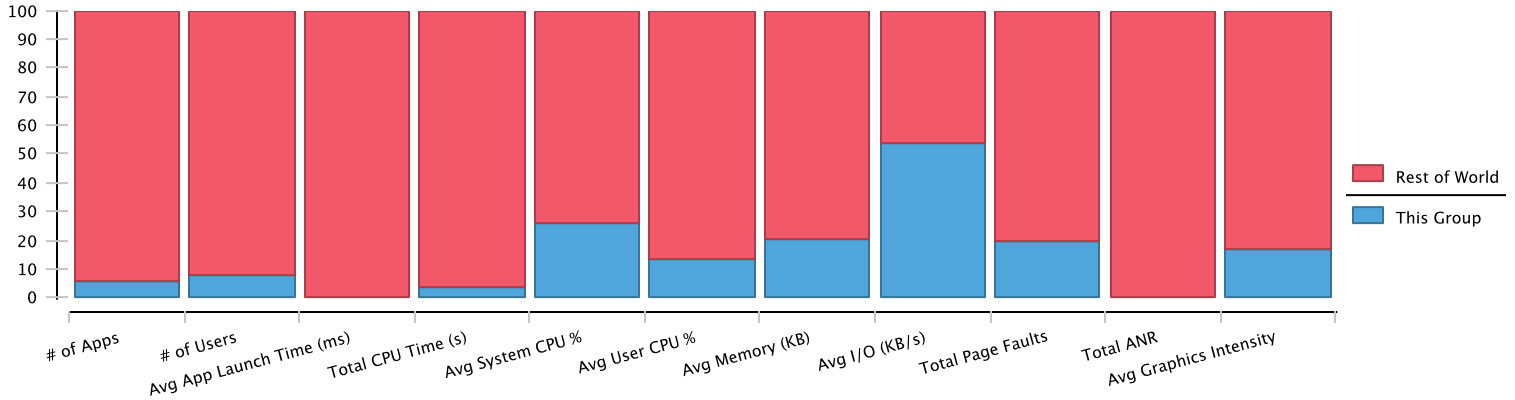
Details - Individual Application Executions Using Most CPU

Application	User	Machine	Avg Launch Time (ms)	Total CPU Time (s)	Avg System CPU %	Avg User CPU %	Avg Mem Size (KB)	Avg I/O (KB/s)	Total Page Faults	Total ANR	Avg Graphics Intensity
VMware View Agent	SYSTEM@Local Directory	WXPX86-FL0-5	0.00	5155.92	0.03	0.01	9808.18	71.25	138308	0	4.00
VMware View Agent	SYSTEM@Local Directory	WXPX86-FL0-3	0.00	5073.63	0.03	0.01	9797.87	71.25	138952	0	4.00
VMware View Agent	SYSTEM@Local Directory	WXPX86-FL0-9	0.00	4961.22	0.03	0.01	9797.59	71.24	138506	0	4.00
VMware View Agent	SYSTEM@Local Directory	WXPX86-FL0-6	0.00	4956.72	0.03	0.01	9834.49	71.25	138721	0	4.00
VMware View Agent	SYSTEM@Local Directory	WXPX86-FL0-4	0.00	4956.33	0.03	0.01	9795.55	71.22	138904	0	4.00
VMware View Agent	SYSTEM@Local Directory	WXPX86-FL0-2	0.00	4940.13	0.03	0.01	9882.57	71.25	138713	0	4.00
VMware View Agent	SYSTEM@Local Directory	WXPX86-FL0-8	0.00	4937.55	0.03	0.01	9885.48	71.26	139234	0	4.00
VMware View Agent	SYSTEM@Local Directory	WXPX86-FL0-10	0.00	4909.20	0.03	0.01	9822.65	71.23	138942	0	4.00
VMware View Agent	SYSTEM@Local Directory	WXPX86-FL0-7	0.00	4901.52	0.03	0.01	9831.72	71.24	139080	0	4.00
VMware View Agent	SYSTEM@Local Directory	WXPX86-FL0-1	0.00	4847.88	0.03	0.01	9859.89	71.27	138884	0	4.00
Generic Host Process for Win32 Services	SYSTEM@Local Directory	WXPX86-FL0-3	0.00	3427.41	0.13	0.05	21094.24	1.04	1331	0	4.00
Generic Host Process for Win32 Services	SYSTEM@Local Directory	WXPX86-FL0-1	0.00	3399.09	0.13	0.04	20949.08	1.04	1379	0	4.00

Machine group: WXPX86-DD1

Time range: October 1, 2011 12:00:00 AM to October 31, 2011 11:59:59 PM US/Eastern

Machines in group: 10



Group Summary

Group	# of Applications	# of Machines	Avg Launch Time (ms)	Total CPU Time (s)	Avg System CPU %	Avg User CPU %	Avg Mem Size (KB)	Avg I/O (KB/s)	Total # Page Faults	Total # ANR	Avg Graphics Intensity
Rest of World	408	41	930473.53	203.02	0.06	0.04	16877.00	11.78	383.77	0	45.41
WXPX86-DD1	26	10	0.00	8.08	0.02	0.01	4252.43	13.79	93.602	0	9.26

Summary - Applications Using Most CPU

Application	Group	# of Users	Avg Launch Time (ms)	Total CPU Time (s)	Avg System CPU %	Avg User CPU %	Avg Mem Size (KB)	Avg I/O (KB/s)	Total # Page Faults	Total # ANR	Avg Graphics Intensity
Windows® installer	Rest of World	0	0.00	0.00	0.00	0.00	0.00	0.00	0	0	0.00
	WXPX86-DD1	1	0.00	242.86	0.93	2.49	12125.80	702.95	1372.5	0	4.00
HotFixInstaller	Rest of World	0	0.00	0.00	0.00	0.00	0.00	0.00	0	0	0.00
	WXPX86-DD1	1	0.00	20.30	0.41	0.40	7111.50	1.33	57.5	0	4.00
VMware View Agent	Rest of World	0	0.00	0.00	0.00	0.00	0.00	0.00	0	0	0.00
	WXPX86-DD1	1	0.00	19.14	0.03	0.01	6044.94	74.99	493.476	0	4.00
Disk Defragmenter NTFS Module	Rest of World	0	0.00	0.00	0.00	0.00	0.00	0.00	0	0	0.00
	WXPX86-DD1	1	0.00	17.97	0.99	0.02	11620.00	0.00	0	0	5.00
Windows Update	Rest of World	0	0.00	0.00	0.00	0.00	0.00	0.00	0	0	0.00
	WXPX86-DD1	1	0.00	14.71	0.21	0.26	49801.51	395.21	2692.418	0	4.00
LSA Shell (Export Version)	Rest of World	0	0.00	0.00	0.00	0.00	0.00	0.00	0	0	0.00
	WXPX86-DD1	1	0.00	14.55	0.02	0.01	2004.01	1.00	20.853	0	4.00
Generic Host Process for Win32 Services	Rest of World	0	0.00	0.00	0.00	0.00	0.00	0.00	0	0	0.00
	WXPX86-DD1	3	0.00	9.11	0.05	0.01	6668.97	0.39	8.103	0	4.10
HOTIRON Hotfix Installer	Rest of World	0	0.00	0.00	0.00	0.00	0.00	0.00	0	0	0.00
	WXPX86-DD1	1	0.00	8.98	0.43	0.40	7187.33	0.67	6	0	4.00
Client Server Runtime Process	Rest of World	0	0.00	0.00	0.00	0.00	0.00	0.00	0	0	0.00
	WXPX86-DD1	1	0.00	8.67	0.00	0.01	1440.03	0.00	0.093	0	62.00
System	Rest of World	0	0.00	0.00	0.00	0.00	0.00	0.00	0	0	0.00
	WXPX86-DD1	1	0.00	6.86	0.01	0.00	86.69	0.00	0	0	0.00
Windows NT Logon Application	Rest of World	0	0.00	0.00	0.00	0.00	0.00	0.00	0	0	0.00
	WXPX86-DD1	1	0.00	6.52	0.01	0.01	5915.11	0.00	10	0	42.00
.NET Runtime Optimization Service	Rest of World	0	0.00	0.00	0.00	0.00	0.00	0.00	0	0	0.00
	WXPX86-DD1	1	0.00	5.77	0.11	0.03	4050.31	0.15	19.231	0	4.00

Details - Individual Application Executions Using Most CPU

Application	User	Machine	Avg Launch Time (ms)	Total CPU Time (s)	Avg System CPU %	Avg User CPU %	Avg Mem Size (KB)	Avg I/O (KB/s)	Total Page Faults	Total ANR	Avg Graphics Intensity
VMware View Agent	SYSTEM@Local Directory	WXPX86-DD1-5	0.00	5486.37	0.04	0.01	6692.55	82.52	138732	0	4.00
VMware View Agent	SYSTEM@Local Directory	WXPX86-DD1-9	0.00	5459.73	0.04	0.01	6214.77	88.82	138698	0	4.00
VMware View Agent	SYSTEM@Local Directory	WXPX86-DD1-10	0.00	5455.74	0.04	0.01	6014.86	74.35	138899	0	4.00

Machine group: WXPX86-DD1

Time range: October 1, 2011 12:00:00 AM to October 31, 2011 11:59:59 PM US/Eastern

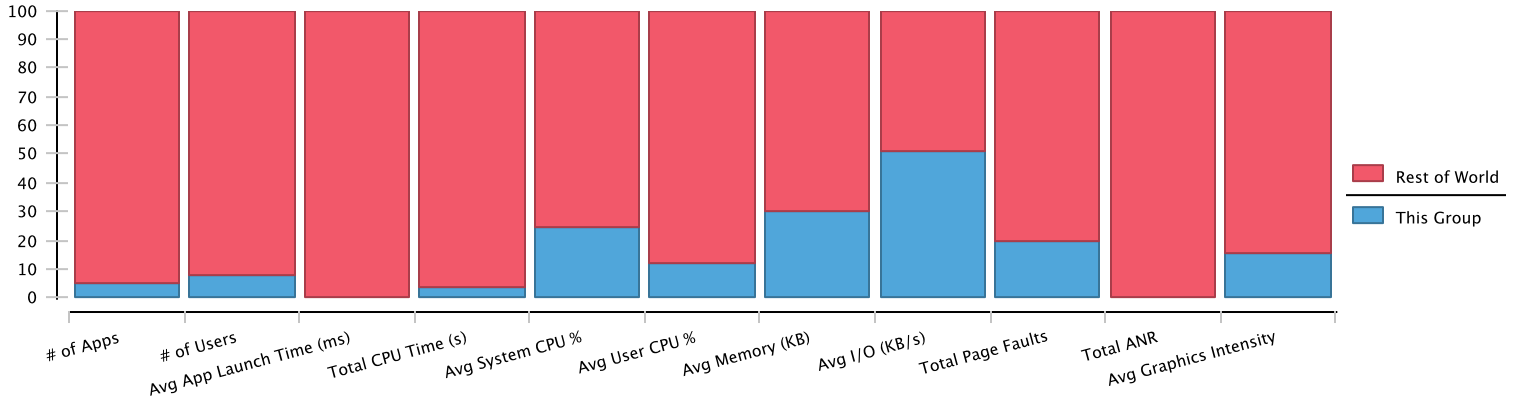
Machines in group: 10

Application	User	Machine	Avg Launch Time (ms)	Total CPU Time (s)	Avg System CPU %	Avg User CPU %	Avg Mem Size (KB)	Avg I/O (KB/s)	Total Page Faults	Total ANR	Avg Graphics Intensity
VMware View Agent	SYSTEM@Local Directory	WXPX86-DD1-6	0.00	5412.09	0.03	0.01	5791.79	71.67	138599	0	4.00
VMware View Agent	SYSTEM@Local Directory	WXPX86-DD1-2	0.00	5393.85	0.03	0.01	5893.66	71.35	138565	0	4.00
VMware View Agent	SYSTEM@Local Directory	WXPX86-DD1-1	0.00	5358.09	0.03	0.01	6195.84	73.88	138784	0	4.00
VMware View Agent	SYSTEM@Local Directory	WXPX86-DD1-7	0.00	5351.46	0.03	0.01	5807.26	71.27	138613	0	4.00
VMware View Agent	SYSTEM@Local Directory	WXPX86-DD1-4	0.00	5296.89	0.03	0.01	6124.76	74.51	138863	0	4.00
VMware View Agent	SYSTEM@Local Directory	WXPX86-DD1-8	0.00	5295.00	0.03	0.01	5827.10	71.25	138639	0	4.00
VMware View Agent	SYSTEM@Local Directory	WXPX86-DD1-3	0.00	5288.94	0.03	0.01	6012.74	73.94	138424	0	4.00
Generic Host Process for Win32 Services	SYSTEM@Local Directory	WXPX86-DD1-1	0.00	4195.71	0.12	0.06	15358.84	1.04	3284	0	4.00
Generic Host Process for Win32 Services	SYSTEM@Local Directory	WXPX86-DD1-5	0.00	4049.94	0.12	0.05	15579.52	1.05	3481	0	4.00

Machine group: WXPX86-FL00

Time range: October 1, 2011 12:00:00 AM to October 31, 2011 11:59:59 PM US/Eastern

Machines in group: 10



Group Summary

Group	# of Applications	# of Machines	Avg Launch Time (ms)	Total CPU Time (s)	Avg System CPU %	Avg User CPU %	Avg Mem Size (KB)	Avg I/O (KB/s)	Total # Page Faults	Total # ANR	Avg Graphics Intensity
Rest of World	409	41	930473.53	207.52	0.06	0.05	16260.27	12.11	345.367	0	46.57
WXPX86-FL00	23	10	0.00	7.70	0.02	0.01	7081.22	12.60	84.236	0	8.54

Summary - Applications Using Most CPU

Application	Group	# of Users	Avg Launch Time (ms)	Total CPU Time (s)	Avg System CPU %	Avg User CPU %	Avg Mem Size (KB)	Avg I/O (KB/s)	Total # Page Faults	Total # ANR	Avg Graphics Intensity
Windows® installer	Rest of World	0	0.00	0.00	0.00	0.00	0.00	0.00	0	0	0.00
	WXPX86-FL00	1	0.00	117.38	0.76	1.02	10858.28	722.61	1200.556	0	4.00
HotFixInstaller	Rest of World	0	0.00	0.00	0.00	0.00	0.00	0.00	0	0	0.00
	WXPX86-FL00	1	0.00	32.37	0.40	0.35	7104.22	1.22	86	0	4.00
LSA Shell (Export Version)	Rest of World	0	0.00	0.00	0.00	0.00	0.00	0.00	0	0	0.00
	WXPX86-FL00	1	0.00	19.38	0.03	0.01	1877.32	1.00	19.577	0	4.00
VMware View Agent	Rest of World	0	0.00	0.00	0.00	0.00	0.00	0.00	0	0	0.00
	WXPX86-FL00	1	0.00	16.76	0.03	0.01	9831.63	71.25	468.749	0	4.00
.NET Runtime Optimization Service	Rest of World	0	0.00	0.00	0.00	0.00	0.00	0.00	0	0	0.00
	WXPX86-FL00	1	0.00	9.72	0.15	0.05	4899.80	1.30	40	0	4.00
Client Server Runtime Process	Rest of World	0	0.00	0.00	0.00	0.00	0.00	0.00	0	0	0.00
	WXPX86-FL00	1	0.00	8.53	0.00	0.01	3338.57	0.00	0.047	0	62.00
Generic Host Process for Win32 Services	Rest of World	0	0.00	0.00	0.00	0.00	0.00	0.00	0	0	0.00
	WXPX86-FL00	3	0.00	7.54	0.04	0.01	9609.73	0.35	2.913	0	4.00
VMware Tools	Rest of World	0	0.00	0.00	0.00	0.00	0.00	0.00	0	0	0.00
	WXPX86-FL00	1	0.00	6.57	0.01	0.00	5353.45	0.00	0.009	0	5.34
System	Rest of World	0	0.00	0.00	0.00	0.00	0.00	0.00	0	0	0.00
	WXPX86-FL00	1	0.00	6.47	0.01	0.00	236.00	0.00	0	0	0.00
Windows Update	Rest of World	0	0.00	0.00	0.00	0.00	0.00	0.00	0	0	0.00
	WXPX86-FL00	1	0.00	6.26	0.09	0.12	12512.47	50.17	233.404	0	4.00
Windows NT Logon Application	Rest of World	0	0.00	0.00	0.00	0.00	0.00	0.00	0	0	0.00
	WXPX86-FL00	1	0.00	5.51	0.01	0.01	12551.72	0.00	10	0	42.00
Services and Controller app	Rest of World	0	0.00	0.00	0.00	0.00	0.00	0.00	0	0	0.00
	WXPX86-FL00	1	0.00	3.52	0.00	0.00	4817.04	0.28	0.298	0	4.00

Details - Individual Application Executions Using Most CPU

Application	User	Machine	Avg Launch Time (ms)	Total CPU Time (s)	Avg System CPU %	Avg User CPU %	Avg Mem Size (KB)	Avg I/O (KB/s)	Total Page Faults	Total ANR	Avg Graphics Intensity
VMware View Agent	SYSTEM@Local Directory	WXPX86-FL0-5	0.00	5155.92	0.03	0.01	9808.18	71.25	138308	0	4.00
VMware View Agent	SYSTEM@Local Directory	WXPX86-FL0-3	0.00	5073.63	0.03	0.01	9797.87	71.25	138952	0	4.00
VMware View Agent	SYSTEM@Local Directory	WXPX86-FL0-4	0.00	4962.69	0.03	0.01	9795.67	71.22	139094	0	4.00

Machine group: WXPX86-FL00

Time range: October 1, 2011 12:00:00 AM to October 31, 2011 11:59:59 PM US/Eastern

Machines in group: 10

Application	User	Machine	Avg Launch Time (ms)	Total CPU Time (s)	Avg System CPU %	Avg User CPU %	Avg Mem Size (KB)	Avg I/O (KB/s)	Total Page Faults	Total ANR	Avg Graphics Intensity
VMware View Agent	SYSTEM@Local Directory	WXPX86-FL0-9	0.00	4961.22	0.03	0.01	9797.59	71.24	138506	0	4.00
VMware View Agent	SYSTEM@Local Directory	WXPX86-FL0-6	0.00	4956.72	0.03	0.01	9834.49	71.25	138721	0	4.00
VMware View Agent	SYSTEM@Local Directory	WXPX86-FL0-2	0.00	4940.13	0.03	0.01	9882.57	71.25	138713	0	4.00
VMware View Agent	SYSTEM@Local Directory	WXPX86-FL0-8	0.00	4937.55	0.03	0.01	9885.48	71.26	139234	0	4.00
VMware View Agent	SYSTEM@Local Directory	WXPX86-FL0-10	0.00	4909.20	0.03	0.01	9822.65	71.23	138942	0	4.00
VMware View Agent	SYSTEM@Local Directory	WXPX86-FL0-7	0.00	4901.52	0.03	0.01	9831.72	71.24	139080	0	4.00
VMware View Agent	SYSTEM@Local Directory	WXPX86-FL0-1	0.00	4847.88	0.03	0.01	9859.89	71.27	138884	0	4.00
Generic Host Process for Win32 Services	SYSTEM@Local Directory	WXPX86-FL0-3	0.00	3427.41	0.13	0.05	21094.24	1.04	1331	0	4.00
Generic Host Process for Win32 Services	SYSTEM@Local Directory	WXPX86-FL0-1	0.00	3399.09	0.13	0.04	20949.08	1.04	1379	0	4.00

Machine group: WXPX86-FL2

Time range: October 1, 2011 12:00:00 AM to October 31, 2011 11:59:59 PM US/Eastern

Machines in group: 10



Group Summary

Group	# of Applications	# of Machines	Avg Launch Time (ms)	Total CPU Time (s)	Avg System CPU %	Avg User CPU %	Avg Mem Size (KB)	Avg I/O (KB/s)	Total # Page Faults	Total # ANR	Avg Graphics Intensity
Rest of World	406	41	930622.45	202.85	0.06	0.04	16833.92	11.76	384.802	0	44.73
WXPX86-FL2	30	10	180537.60	8.03	0.02	0.01	4339.55	13.86	93.854	0	9.74

Summary - Applications Using Most CPU

Application	Group	# of Users	Avg Launch Time (ms)	Total CPU Time (s)	Avg System CPU %	Avg User CPU %	Avg Mem Size (KB)	Avg I/O (KB/s)	Total # Page Faults	Total # ANR	Avg Graphics Intensity
Windows® installer	Rest of World	0	0.00	0.00	0.00	0.00	0.00	0.00	0	0	0.00
	WXPX86-FL2	1	0.00	211.73	0.70	1.60	10704.04	528.74	987.391	0	4.00
Firefox	Rest of World	0	0.00	0.00	0.00	0.00	0.00	0.00	0	0	0.00
	WXPX86-FL2	3	2500.00	171.61	1.13	2.33	118765.00	29.00	1005.75	0	423.00
HotFixInstaller	Rest of World	0	0.00	0.00	0.00	0.00	0.00	0.00	0	0	0.00
	WXPX86-FL2	1	0.00	35.10	0.40	0.38	7074.20	0.80	78.3	0	4.00
VMware View Agent	Rest of World	0	0.00	0.00	0.00	0.00	0.00	0.00	0	0	0.00
	WXPX86-FL2	5	0.00	19.09	0.03	0.01	6165.27	75.44	496.426	0	4.01
Plugin Container for Firefox	Rest of World	0	0.00	0.00	0.00	0.00	0.00	0.00	0	0	0.00
	WXPX86-FL2	2	0.00	16.99	0.10	0.37	19591.75	9.25	15.75	0	11.00
LSA Shell (Export Version)	Rest of World	0	0.00	0.00	0.00	0.00	0.00	0.00	0	0	0.00
	WXPX86-FL2	1	0.00	15.04	0.02	0.01	1901.62	1.00	19.5	0	4.66
Windows Update	Rest of World	0	0.00	0.00	0.00	0.00	0.00	0.00	0	0	0.00
	WXPX86-FL2	1	0.00	13.83	0.19	0.25	44042.39	357.59	2452.13	0	4.02
Generic Host Process for Win32 Services	Rest of World	0	0.00	0.00	0.00	0.00	0.00	0.00	0	0	0.00
	WXPX86-FL2	3	0.00	8.04	0.05	0.01	6381.77	0.37	7.546	0	4.61
VMware Tools	Rest of World	0	0.00	0.00	0.00	0.00	0.00	0.00	0	0	0.00
	WXPX86-FL2	5	31.00	7.24	0.01	0.00	2403.78	0.00	0.015	0	6.23
Client Server Runtime Process	Rest of World	0	0.00	0.00	0.00	0.00	0.00	0.00	0	0	0.00
	WXPX86-FL2	1	0.00	6.74	0.00	0.01	1484.63	0.00	0.093	0	62.00
.NET Runtime Optimization Service	Rest of World	0	0.00	0.00	0.00	0.00	0.00	0.00	0	0	0.00
	WXPX86-FL2	1	0.00	6.33	0.12	0.04	4208.91	0.27	24.545	0	4.00
System	Rest of World	0	0.00	0.00	0.00	0.00	0.00	0.00	0	0	0.00
	WXPX86-FL2	1	0.00	6.18	0.01	0.00	87.23	0.01	0.001	0	0.00

Details - Individual Application Executions Using Most CPU

Application	User	Machine	Avg Launch Time (ms)	Total CPU Time (s)	Avg System CPU %	Avg User CPU %	Avg Mem Size (KB)	Avg I/O (KB/s)	Total Page Faults	Total ANR	Avg Graphics Intensity
VMware View Agent	SYSTEM@Local Directory	WXPX86-FL2-2	0.00	5380.71	0.04	0.01	6251.89	79.32	138740	0	4.00
VMware View Agent	SYSTEM@Local Directory	WXPX86-FL2-8	0.00	5365.77	0.03	0.01	5974.04	71.22	138611	0	4.00
VMware View Agent	SYSTEM@Local Directory	WXPX86-FL2-9	0.00	5356.53	0.03	0.01	6228.40	76.95	138881	0	4.00

Machine group: WXPX86-FL2

Time range: October 1, 2011 12:00:00 AM to October 31, 2011 11:59:59 PM US/Eastern

Machines in group: 10

Application	User	Machine	Avg Launch Time (ms)	Total CPU Time (s)	Avg System CPU %	Avg User CPU %	Avg Mem Size (KB)	Avg I/O (KB/s)	Total Page Faults	Total ANR	Avg Graphics Intensity
VMware View Agent	SYSTEM@Local Directory	WXPX86-FL2-10	0.00	5353.05	0.03	0.01	6243.21	77.90	138594	0	4.00
VMware View Agent	SYSTEM@Local Directory	WXPX86-FL2-4	0.00	5338.02	0.04	0.01	6288.66	79.30	138572	0	4.00
VMware View Agent	SYSTEM@Local Directory	WXPX86-FL2-3	0.00	5320.38	0.03	0.01	5870.70	71.27	138624	0	4.00
VMware View Agent	SYSTEM@Local Directory	WXPX86-FL2-1	0.00	5319.99	0.03	0.01	6157.97	71.30	138877	0	4.01
VMware View Agent	SYSTEM@Local Directory	WXPX86-FL2-5	0.00	5317.71	0.03	0.01	5893.92	71.20	138661	0	4.00
VMware View Agent	SYSTEM@Local Directory	WXPX86-FL2-6	0.00	5315.10	0.04	0.01	6458.50	79.71	138501	0	4.00
VMware View Agent	SYSTEM@Local Directory	WXPX86-FL2-7	0.00	5273.58	0.03	0.01	6368.95	78.58	138754	0	4.00
Generic Host Process for Win32 Services	SYSTEM@Local Directory	WXPX86-FL2-9	0.00	3637.74	0.14	0.04	15406.33	1.05	3418	0	6.51
Generic Host Process for Win32 Services	SYSTEM@Local Directory	WXPX86-FL2-10	0.00	3526.08	0.13	0.04	15672.29	1.04	3320	0	6.24

