

# Liquidware Labs ProfileUnity™

## Positioning with Citrix XenDesktop and XenApp

---

**Background:** Citrix XenDesktop and XenApp customers looking to migrate from Server 2003 or Win XP to Server 2008 or Win 7 based environments can do so seamlessly with Liquidware Labs ProfileUnity™. Citrix provides a profile solution known as Citrix UPM. Many customers use Citrix UPM to manage and store the persona (profiles) of users' sessions. This enables them to leverage the use of stateless desktops for reduced licensing costs, infrastructure cost savings, as well as realize streamlined management benefits. Citrix UPM is a straight-forward profile solution for one singular Citrix Windows OS environment. Citrix UPM answers the basic dilemma of managing profiles in a simple Citrix implementation however it does not allow users to crossover from one desktop OS version to the next and also has known challenges when scaling for large implementations.

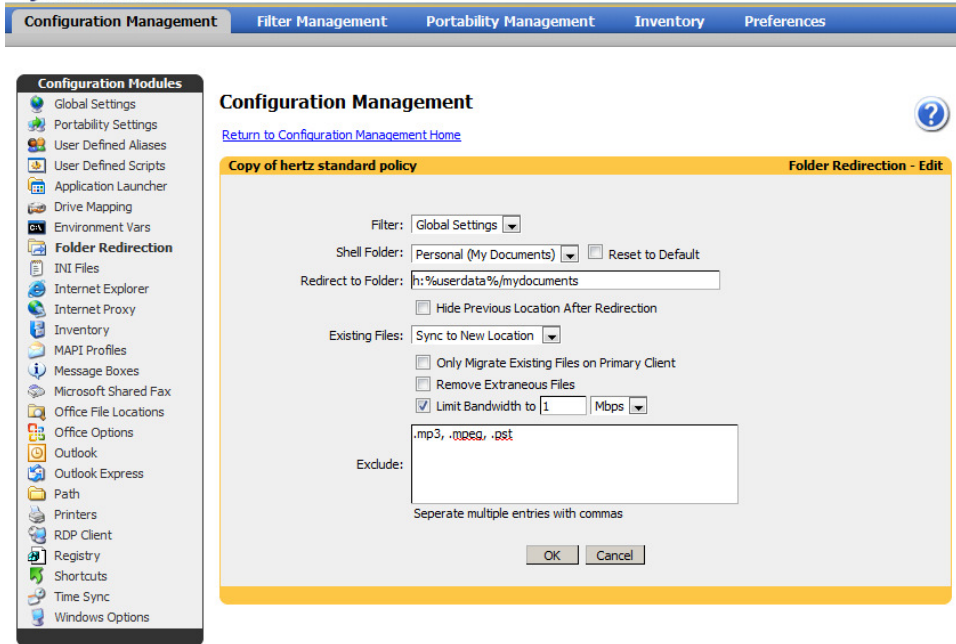
Liquidware Labs is a Citrix Ready Partner and has worked with the Citrix Desktop Transformation team to ensure customers have a clear and cost-effective solution that solves profile challenges in non-persistent environments, enables customers to use heterogeneous OS version environments, and seamlessly scales to thousands of users. ProfileUnity goes beyond the limitations of Citrix UPM to provide full user virtualization management with the ability to migrate, leverage the solution for disaster recovery, and provision new users without logon scripts or cumbersome Group Policy Preferences. ProfileUnity also features speedy login times through innovative file compression and a reduction in profile bloat.

**About ProfileUnity:** Liquidware Labs ProfileUnity is a comprehensive user virtualization management solution. Benefits of use include one unified user profile that lets a user logon to any Windows operating system (XP/2000/Server 2003/Vista/Win7/Server 2008), centrally manage user configuration settings, and maintain user persona and settings even in non-persistent desktop environments. ProfileUnity is being used globally by companies looking to break free from Roaming Profiles and other proprietary user virtualization management solutions once and for all. It encompasses many enterprise features not found in basic profile solutions. ProfileUnity boasts ease of end-user use without the need for proprietary databases or expensive, additional infrastructure. ProfileUnity maintains user profiles using Windows' own native format and therefore keeps profile data compatible with any other profile solution that accepts native profiles.

## ProfileUnity Goes Beyond Single OS Persona Management

While ProfileUnity solves persona management in order to leverage linked clones, the solution goes beyond the capabilities of standard profile solutions to provide full user virtualization management with the following capabilities:

- Supports both V1 to V2 operating system environments seamlessly
- Migrates legacy profiles to Windows 7 environments effortlessly
- Automates Data Migration - harvest data from user authored areas then automatically invoke folder redirections to those areas
- Enables the administrator to tune the profile and eliminate profile bloat
- Eliminates profile corruption; ProfileUnity profiles can be easily restored to an earlier version with a DR managed server
- Provides location aware settings for printers, virtualized applications, and more
- Replaces the use of login scripts for mapped drives, printers, desktop shortcuts, etc.
- Enables administrators to easily provision new user settings, i.e. a new user can logon and in just 7-10 seconds be fully productive with email, printers, drives, etc.
- Serves as a disaster recovery solution for any desktop - User Authored Data and Profiles are the most mission critical info and ProfileUnity securely stores both of these onto DR managed servers
- Allows users to co-exist in a mixed version 1 and version 2 environments. Help desk supports only one profile per person, not per machine
- Works across Citrix, VMware, Terminal Services, and physical PCs
- Includes software and hardware inventory, often used as a quick troubleshooting mechanism for help desks



*Easily Migrate Users from Physical PCs or other Windows Environments with ProfileUnity*

### Fully Compatible with Citrix Environments and Citrix UPM

ProfileUnity keeps profiles and user authored data in Windows' native format. You'll always have the option to easily manage your profiles with any other compatible solution if you choose to do so at a later date. ProfileUnity does not create a vendor locked-in (proprietary format) profile that may be found in other solutions. ProfileUnity can even work alongside other profile solutions if you so choose. You can also still fully leverage all of the advanced enterprise features in ProfileUnity outlined in this document even if your profile is managed separately.

### Product Family Advantage

The Liquidware Labs' Essentials bundle combines the ProfileUnity solution with the Stratusphere FIT™ and Stratusphere UX™ solutions to provide the end-to-end functionality needed to move through a Citrix desktop deployment successfully. Stratusphere FIT can inventory and assess your current environment to aid in designing the target environment. ProfileUnity and Stratusphere UX work together to easily migrate your users and manage the performance of the new systems to ensure a quality user experience.

Pricing for Citrix customers can be requested by emailing [sales@liquidwarelabs.com](mailto:sales@liquidwarelabs.com). For more information, including a trial download visit [www.LiquidwareLabs.com](http://www.LiquidwareLabs.com)

*Citrix and Citrix UPM are registered trademarks of Citrix Systems Inc., it is not the intent of Liquidware Labs to claim these as our own.*